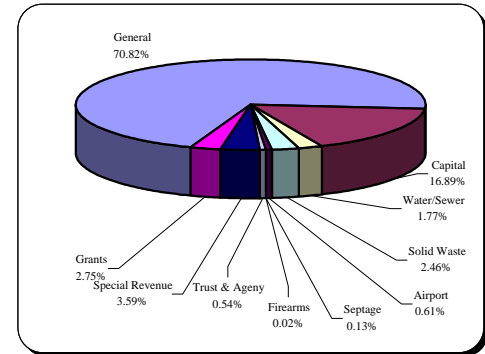


Financial and Demographic Data

Proposed FY 04 Budget By Fund

<u>Fund Type</u>	<u>FY 04</u>
General	\$244,749,280
Capital	\$58,358,091
Water and Sewer	\$7,596,010
Solid Waste	\$8,501,150
Airport	\$2,092,420
Firearms	\$53,000
Septage	\$465,825
Trust & Agency	\$1,878,725
Special Revenue	\$12,400,505
Grants	\$9,504,914
Total	\$345,599,920

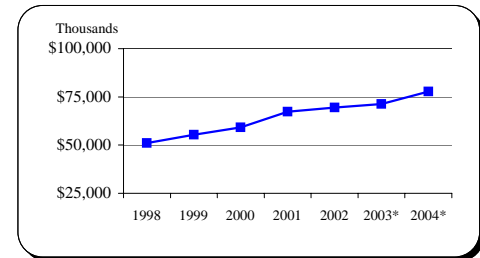


Income Tax Collected-Operating

<u>Year</u>	<u>Taxes Collected</u>	<u>% Change</u>
1998	\$51,004,103	8.7%
1999	\$55,343,935	8.5%
2000	\$59,161,400	6.9%
2001	\$67,230,134	13.6%
2002	\$69,517,735	3.4%
2003*	\$71,217,700	2.5%
2004*	\$77,780,000	9.2%

Current tax rate 2.85%-FY 04 tax rate is 3.05%.

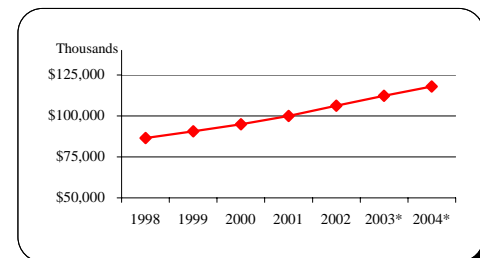
Approximately 10% of income tax revenue is dedicated to the Capital Budget.



Total Local Property Tax Collected-Operating

<u>Year</u>	<u>Taxes Collected</u>	<u>% Change</u>
1998	\$86,541,951	2.7%
1999	\$90,693,939	4.8%
2000	\$94,860,502	4.6%
2001	\$100,035,215	5.5%
2002	\$106,225,021	6.2%
2003*	\$112,192,545	5.6%
2004*	\$117,959,096	5.1%

Tax rate is \$1.048, approximately \$.032 of the real property tax revenue is dedicated to the Capital Budget.

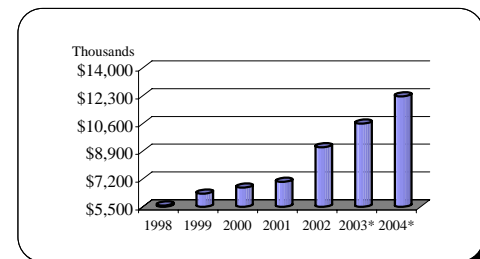


Recordation Tax Collected

<u>Year</u>	<u>Base</u>	<u>% Change</u>
1998	\$5,588,996	10.3%
1999	\$6,313,418	13.0%
2000	\$6,679,924	5.8%
2001	\$7,033,325	5.3%
2002	\$9,157,726	30.2%
2003*	\$10,600,000	15.7%
2004*	\$12,275,489	15.8%

Prior to FY 02, local jurisdictions received 95% of total collections.

FY 02 and afterwards, local jurisdictions retain total collections.



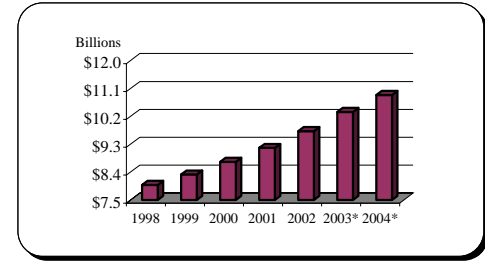
* Indicates estimated values

Financial and Demographic Data

Assessable Base-Real and Personal Property

Year	Base	% Change
1998	\$7,988,165,580	3.4%
1999	\$8,324,554,485	4.2%
2000	\$8,731,818,355	4.9%
2001	\$9,180,260,290	5.1%
2002	\$9,726,556,899	6.0%
2003*	\$10,345,165,918	6.4%
2004*	\$10,891,390,678	5.3%

All years are expressed at 100% of assessed value.

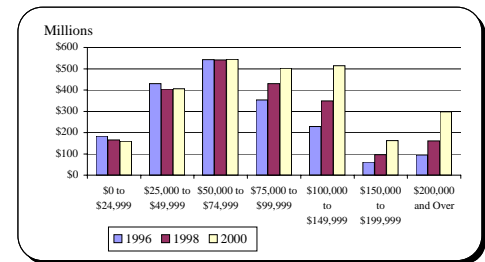


Net Taxable Income

Calendar Year	1996	1998	2000
\$0 to \$24,999	\$183,251,426	\$165,045,511	\$159,512,609
\$25,000 to \$49,999	\$430,443,528	\$404,870,880	\$406,003,679
\$50,000 to \$74,999	\$543,076,298	\$541,314,959	\$544,537,989
\$75,000 to \$99,999	\$353,371,258	\$430,570,989	\$502,317,007
\$100,000 to \$149,999	\$228,131,171	\$348,987,434	\$513,896,649
\$150,000 to \$199,999	\$61,722,552	\$96,156,918	\$161,712,396
\$200,000 and Over	\$94,378,607	\$161,582,723	\$298,245,725

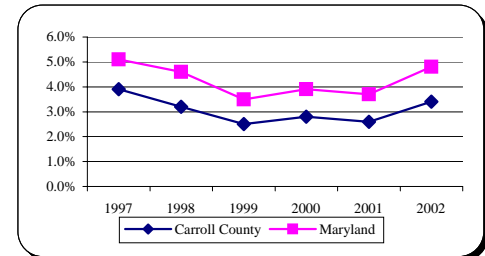
Source: Comptroller of Maryland Income Tax Summary Report

All figures are based on current dollars.



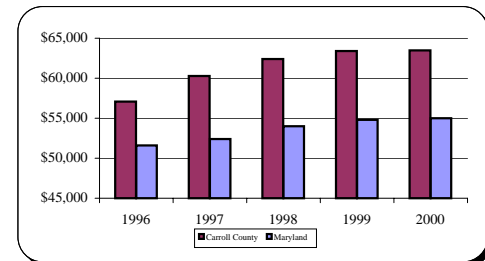
Average Annual Unemployment Rates

Year	Carroll County	Maryland
1997	3.9%	5.1%
1998	3.2%	4.6%
1999	2.5%	3.5%
2000	2.8%	3.9%
2001	2.6%	3.7%
2002	3.4%	4.8%



Median Household Income

Year	Carroll County	Maryland
1996	\$57,100	\$51,600
1997	\$60,300	\$52,400
1998	\$62,400	\$54,000
1999	\$63,400	\$54,800
2000	\$63,500	\$55,000

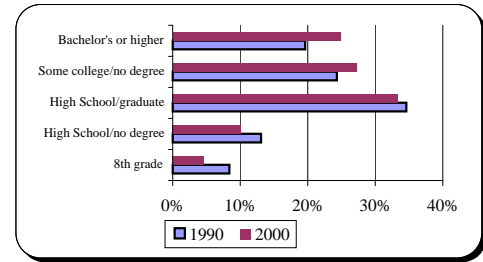


* Indicates estimated values

Financial and Demographic Data

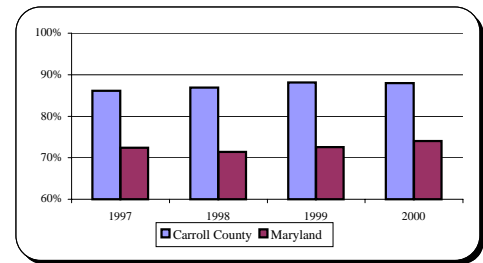
Education Attainment

<u>Level</u>	<u>1990</u>	<u>2000</u>
8th grade	8.4%	4.6%
High School/no degree	13.1%	10.1%
High School/graduate	34.6%	33.3%
Some college/no degree	24.3%	27.2%
Bachelor's or higher	19.6%	24.8%



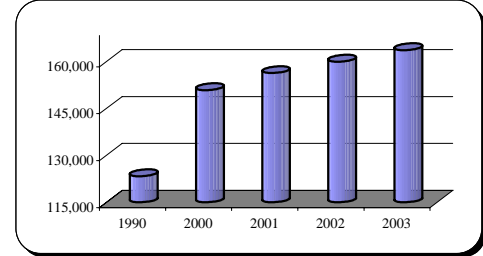
Graduation Rates

<u>Year</u>	<u>Carroll County</u>	<u>Maryland</u>
1997	86.1%	72.4%
1998	86.9%	71.4%
1999	88.1%	72.6%
2000	88.0%	74.0%



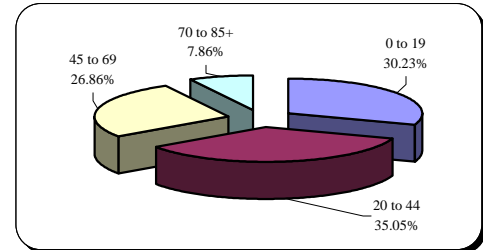
Population

<u>Year</u>	<u>Carroll County</u>
Apr. 1, 1990 Census	123,372
Apr. 1, 2000 Census	150,897
Dec. 31, 2001 Estimate	156,362
Dec. 31, 2002 Projection	160,015
Dec. 31, 2003 Projection	163,668



Population By Age Composition in Year 2000

<u>Age Group</u>	<u>Population</u>
0 to 19	45,623
20 to 44	52,889
45 to 69	40,524
70 to 85 and Older	11,861
Total	150,897



* Indicates estimated values