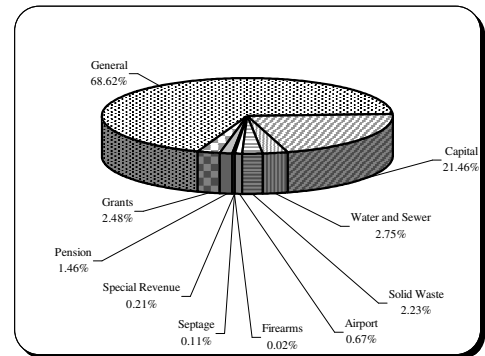


Financial and Demographic Data

Proposed FY 06 Budget By Fund

Fund Type	FY 06
General	\$283,722,550
Capital	88,717,890
Water and Sewer	11,388,581
Solid Waste	9,221,830
Airport	2,756,160
Firearms	60,160
Septage	450,000
Special Revenue	866,000
Pension	6,048,043
Grants	10,233,888
Total	\$413,465,102



Income Tax Collected-Operating

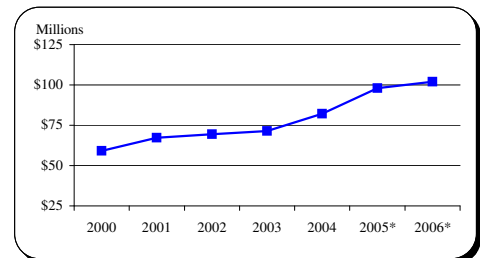
Year	Taxes Collected	% Change
2000	\$59,161,400	6.9%
2001	67,230,134	13.6%
2002	69,517,735	3.4%
2003	71,480,051	2.8%
2004	82,191,515	15.0%
2005*	98,000,000	19.2%
2006*	102,000,000	4.1%

Tax rate increased from 2.85% to 3.05% effective Jan 1, 2004.

Because income taxes are based on a calendar year and the County's budget is based on a July 1 through June 30 fiscal year, only 1/2 of the collections of FY 04 are affected.

9.09% of income tax revenue is directly appropriated to the CIP.

Source: FY 00-FY 04 Carroll County CAFR



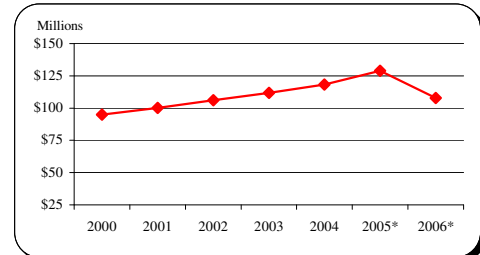
Total Local Property Tax Collected-Operating

Year	Taxes Collected	% Change
2000	\$94,860,502	4.6%
2001	100,035,215	5.5%
2002	106,225,021	6.2%
2003	111,876,417	5.3%
2004	118,161,173	5.6%
2005*	128,939,470	9.1%
2006*	107,766,650	-16.4%

Tax rate is \$1.048, 3% of the real property tax revenue is directly appropriated to the CIP or related debt service for Agricultural Preservation.

\$30.9 million directly appropriated to FY 06 CIP for one-time expenditures.

Source: FY 00-FY 04 Carroll County CAFR



Recordation Tax Collected

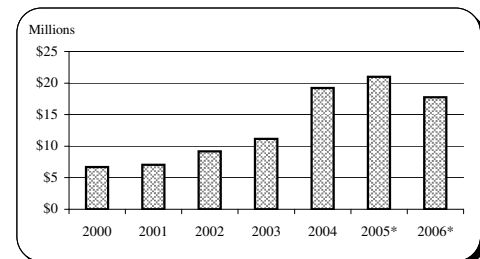
Year	Base	% Change
2000	\$6,679,924	5.8%
2001	7,033,325	5.3%
2002	9,157,726	30.2%
2003	11,152,453	21.8%
2004	19,238,898	72.5%
2005*	21,000,000	9.2%
2006*	17,750,000	-15.5%

Prior to FY 02, the State collected recordation tax and retained 5%.

Beginning in FY 02, the County took over the collections and retains 100%.

Beginning in FY 04, tax rate increased from \$3.50 per \$500 to \$5.00 per \$500.

Source: FY 99-FY 03 Carroll County CAFR



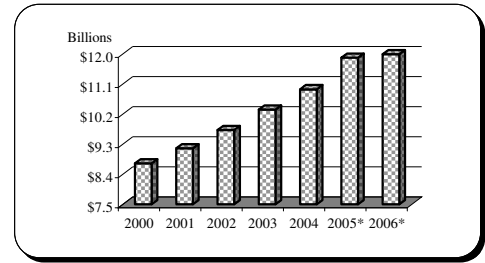
* Indicates estimated collections

Financial and Demographic Data

Assessable Base-Real and Personal Property

<u>Year</u>	<u>Base</u>	<u>% Change</u>
2000	\$8,731,818,355	4.9%
2001	9,180,260,290	5.1%
2002	9,726,556,899	6.0%
2003	10,340,867,012	6.3%
2004	10,948,754,959	5.9%
2005*	11,891,468,000	8.6%
2006*	13,323,163,000	12.0%

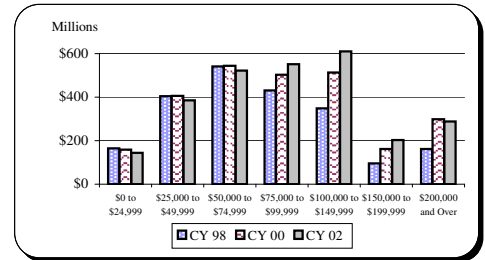
All years are expressed at 100% of assessed value.
Source: FY 99-FY 03 Carroll County CAFR



Net Taxable Income

<u>Income Range</u>	<u>CY 98</u>	<u>CY 00</u>	<u>CY 02</u>
\$0 to \$24,999	\$165,045,511	\$159,512,609	\$143,812,972
\$25,000 to \$49,999	404,870,880	406,003,679	384,784,150
\$50,000 to \$74,999	541,314,959	544,537,989	522,478,280
\$75,000 to \$99,999	430,570,989	502,317,007	551,668,546
\$100,000 to \$149,999	348,987,434	513,896,649	610,887,788
\$150,000 to \$199,999	96,156,918	161,712,396	203,196,007
\$200,000 and Over	161,582,723	298,245,725	288,345,573

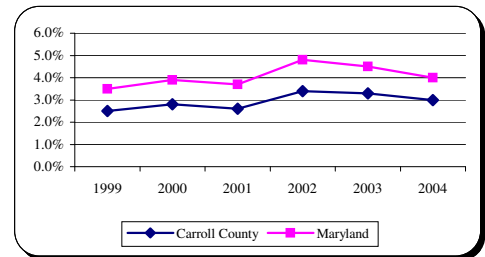
All figures are based on current dollars.
Source: Comptroller of Maryland Income Tax Summary Report



Average Annual Unemployment Rates

<u>Year</u>	<u>Carroll County</u>	<u>Maryland</u>
1999	2.5%	3.5%
2000	2.8%	3.9%
2001	2.6%	3.7%
2002	3.4%	4.8%
2003	3.3%	4.5%
2004	3.0%	4.0%

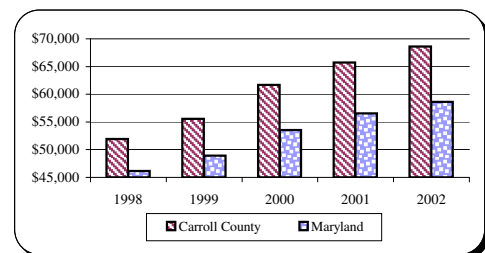
Source: MD Department of Labor, Licensing and Regulation



Median Household Income

<u>Year</u>	<u>Carroll County</u>	<u>Maryland</u>
1998	\$51,902	\$46,150
1999	55,556	48,935
2000	61,675	53,541
2001	65,699	56,545
2002	68,600	58,600

All figures adjusted to 2002 dollars
Source: 2004 Carroll County Credit Rating



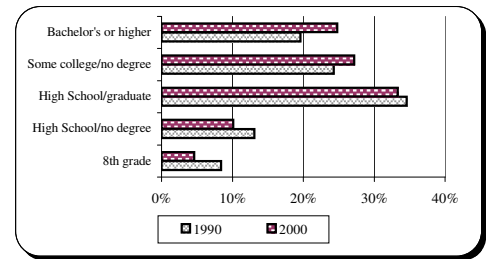
* Indicates estimated collections

Financial and Demographic Data

Education Attainment

Level	1990	2000
8th grade	8.4%	4.6%
High School/no degree	13.1%	10.1%
High School/graduate	34.6%	33.3%
Some college/no degree	24.3%	27.2%
Bachelor's or higher	19.6%	24.8%

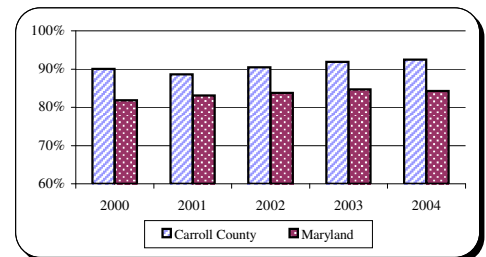
Source: US Census Bureau



Graduation Rates

Year	Carroll County	Maryland
2000	90.0%	81.8%
2001	88.6%	83.1%
2002	90.5%	83.8%
2003	91.9%	84.7%
2004	92.5%	84.3%

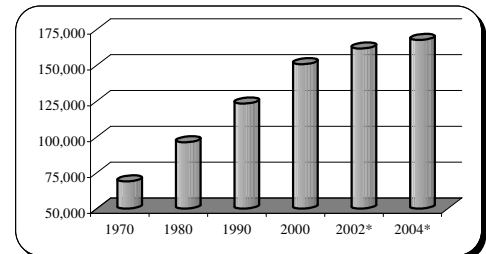
Source: MD Department of Education, 2004 MSDE Report Card



Population

Year	Carroll County
Apr. 1, 1970 Census	69,006
Apr. 1, 1980 Census	96,356
Apr. 1, 1990 Census	123,372
Apr. 1, 2000 Census	150,897
Dec. 31, 2002 Estimate*	161,808
Dec. 31, 2005 Projection*	167,730

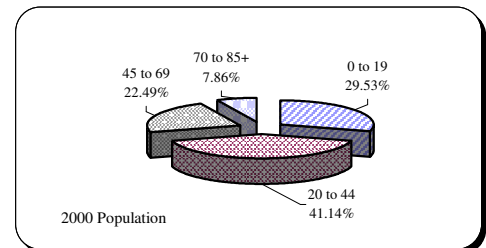
Source: MD and Carroll County Departments of Planning



Population By Age Composition in Year 2000

Age Group	1990	2000
0 to 19	36,434	45,623
20 to 44	50,752	52,889
45 to 69	27,750	40,524
70 to 85 and Older	8,436	11,861
Total	123,372	150,897

Source: US Census Bureau and Carroll County Department of Planning

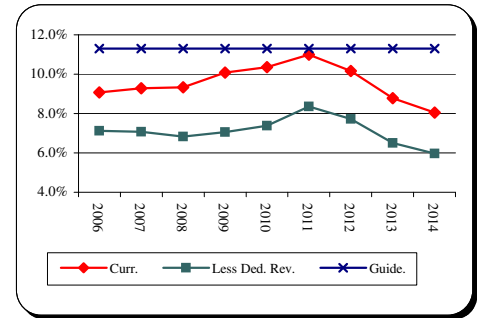


* Indicates estimated collections

Financial and Demographic Data

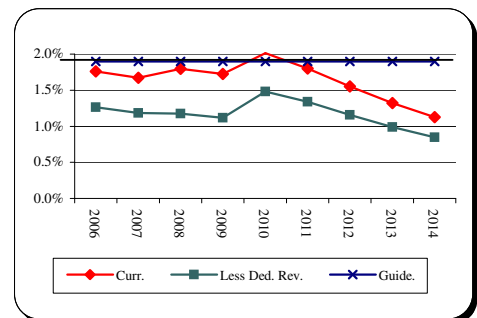
General Fund Debt Service/General Fund Revenue

<u>Fiscal Year</u>	<u>Current Position</u>	<u>Less Dedicated Revenue and Supported DS</u>	<u>County Guideline</u>
2006	9.1%	7.1%	11.3%
2007	9.3%	7.1%	11.3%
2008	9.3%	6.8%	11.3%
2009	10.1%	7.0%	11.3%
2010	10.4%	7.4%	11.3%
2011	11.0%	8.4%	11.3%
2012	10.2%	7.7%	11.3%
2013	8.8%	6.5%	11.3%
2014	8.1%	6.0%	11.3%



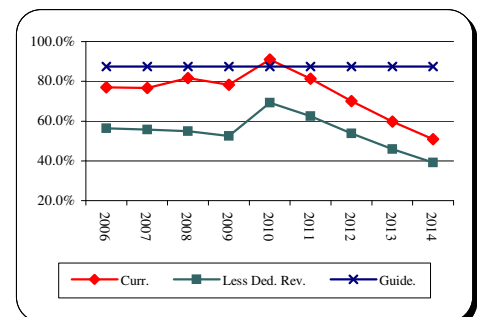
General Fund Debt/Assessable Base

<u>Fiscal Year</u>	<u>Current Position</u>	<u>Less Dedicated Revenue and Supported Debt</u>	<u>County Guideline</u>
2006	1.8%	1.3%	1.9%
2007	1.7%	1.2%	1.9%
2008	1.8%	1.2%	1.9%
2009	1.7%	1.1%	1.9%
2010	2.0%	1.5%	1.9%
2011	1.8%	1.3%	1.9%
2012	1.6%	1.2%	1.9%
2013	1.3%	1.0%	1.9%
2014	1.1%	0.8%	1.9%



General Fund Debt/General Fund Revenue

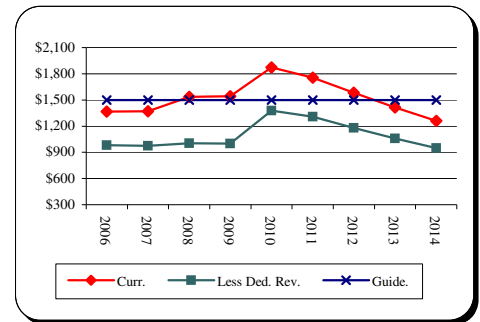
<u>Fiscal Year</u>	<u>Current Position</u>	<u>Less Dedicated Revenue and Supported Debt</u>	<u>County Guideline</u>
2006	77.0%	56.4%	87.4%
2007	76.6%	55.8%	87.4%
2008	81.6%	54.9%	87.4%
2009	78.3%	52.5%	87.4%
2010	91.0%	69.2%	87.4%
2011	81.3%	62.4%	87.4%
2012	70.1%	53.8%	87.4%
2013	59.8%	45.9%	87.4%
2014	50.9%	39.2%	87.4%



Financial and Demographic Data

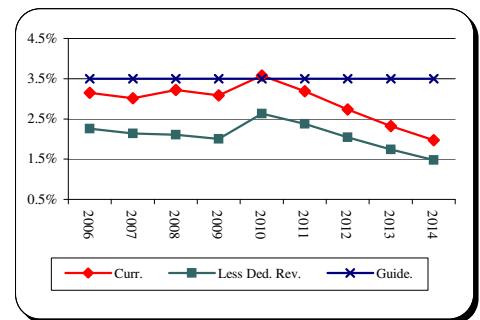
General Fund Debt/Capita

<u>Fiscal Year</u>	<u>Current Position</u>	<u>Less Dedicated Revenue and Supported Debt</u>	<u>County Guideline</u>
2006	\$1,368	\$980	\$1,500
2007	1,372	974	1,500
2008	1,537	1,006	1,500
2009	1,542	1,000	1,500
2010	1,874	1,379	1,500
2011	1,755	1,308	1,500
2012	1,583	1,182	1,500
2013	1,413	1,057	1,500
2014	1,260	948	1,500



General Fund Debt/Personal Income

<u>Fiscal Year</u>	<u>Current Position</u>	<u>Less Dedicated Revenue and Supported Debt</u>	<u>County Guideline</u>
2006	3.1%	2.3%	3.5%
2007	3.0%	2.1%	3.5%
2008	3.2%	2.1%	3.5%
2009	3.1%	2.0%	3.5%
2010	3.6%	2.6%	3.5%
2011	3.2%	2.4%	3.5%
2012	2.7%	2.0%	3.5%
2013	2.3%	1.7%	3.5%
2014	2.0%	1.5%	3.5%



Source: Bureau of Economic Analysis

Total Debt Service/General Fund Revenue

<u>Fiscal Year</u>	<u>Current Position</u>	<u>Less Dedicated Revenue and Supported DS</u>	<u>County Guideline</u>
2006	9.9%	7.2%	12.0%
2007	10.1%	7.1%	12.0%
2008	10.1%	6.9%	12.0%
2009	10.8%	7.1%	12.0%
2010	11.0%	7.4%	12.0%
2011	11.6%	8.4%	12.0%
2012	10.8%	7.8%	12.0%
2013	9.1%	6.6%	12.0%
2014	8.3%	6.0%	12.0%

