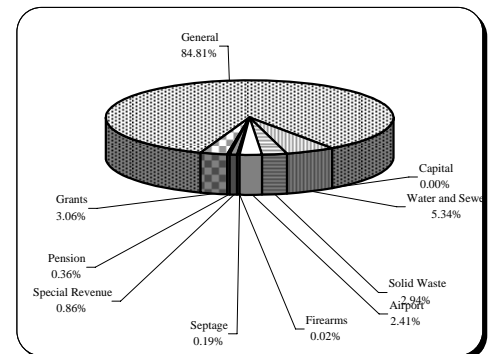


Financial and Demographic Data

FY 07 Budget By Fund

<u>Fund Type</u>	<u>FY 07</u>
General	\$302,636,000
Capital	110,627,037
Water and Sewer	19,072,139
Solid Waste	10,492,320
Airport	8,615,908
Firearms	64,000
Septage	689,000
Special Revenue	3,062,900
Pension	1,295,050
Grants	10,908,092
Total	\$467,462,446



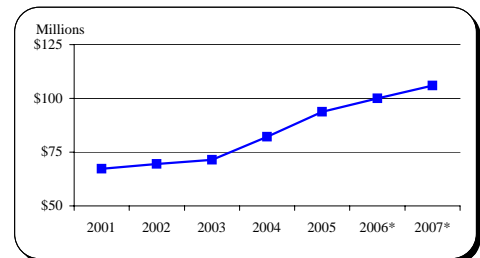
Income Tax Collected-Operating

<u>Year</u>	<u>Taxes Collected</u>	<u>% Change</u>
2001	67,230,134	13.6%
2002	69,517,735	3.4%
2003	71,480,051	2.8%
2004	82,191,515	15.0%
2005	93,818,463	14.1%
2006*	100,000,000	6.6%
2007*	106,000,000	6.0%

Tax rate increased from 2.85% to 3.05% effective Jan 1, 2004.

Because income taxes are based on a calendar year and the County's budget is based on a July 1 through June 30 fiscal year, only 1/2 of the collections of FY 04 are affected. 9.09% of income tax revenue is directly appropriated to the CIP.

Source: FY 01-FY 05 Carroll County CAFR

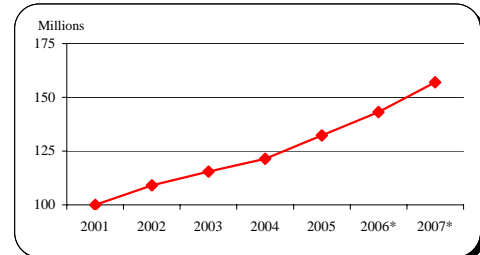


Total Local Property Tax Collected

<u>Year</u>	<u>Taxes Collected</u>	<u>% Change</u>
2001	100,035,214	5.5%
2002	109,026,120	9.0%
2003	115,417,116	5.9%
2004	121,407,052	5.2%
2005	132,226,766	8.9%
2006*	143,142,350	8.3%
2007*	157,025,900	9.7%

Tax rate is \$1.048 for Real Property and 2.62% for Personal Property

Source: FY 01-FY 05 Carroll County CAFR



Recordation Tax Collected

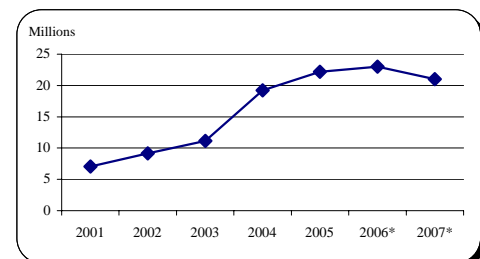
<u>Year</u>	<u>Base</u>	<u>% Change</u>
2001	7,033,325	5.3%
2002	9,157,726	30.2%
2003	11,152,453	21.8%
2004	19,238,898	72.5%
2005	22,207,072	15.4%
2006*	23,000,000	3.6%
2007*	21,000,000	-8.7%

Prior to FY 02, the State collected recordation tax and retained 5%.

Beginning in FY 02, the County took over the collections and retains 100%.

Beginning in FY 04, tax rate increased from \$3.50 per \$500 to \$5.00 per \$500.

Source: FY 01-FY 05 Carroll County CAFR



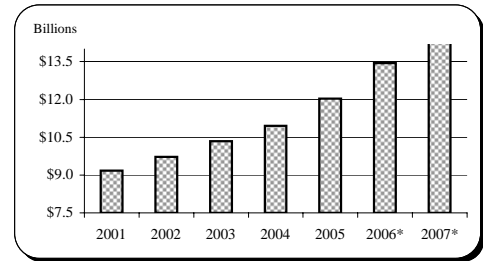
* Indicates estimate

Financial and Demographic Data

Assessable Base-Real and Personal Property

Year	Base	% Change
2001	9,180,260,290	5.1%
2002	9,726,556,899	6.0%
2003	10,340,867,012	6.3%
2004	10,948,754,959	5.9%
2005	12,034,458,190	9.9%
2006*	13,438,532,000	11.7%
2007*	15,299,926,000	13.9%

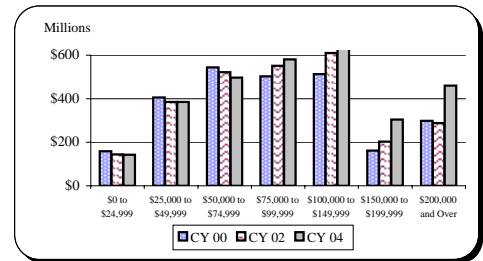
All years are expressed at 100% of assessed value.
Source: FY 01-FY 05 Carroll County CAFR



Net Taxable Income

Income Range	CY 00	CY 02	CY 04
\$0 to \$24,999	\$159,512,609	\$143,812,972	\$142,600,510
\$25,000 to \$49,999	406,003,679	384,784,150	385,916,181
\$50,000 to \$74,999	544,537,989	522,478,280	497,747,551
\$75,000 to \$99,999	502,317,007	551,668,546	580,845,764
\$100,000 to \$149,999	513,896,649	610,887,788	752,517,723
\$150,000 to \$199,999	161,712,396	203,196,007	304,860,906
\$200,000 and Over	298,245,725	288,345,573	460,386,592

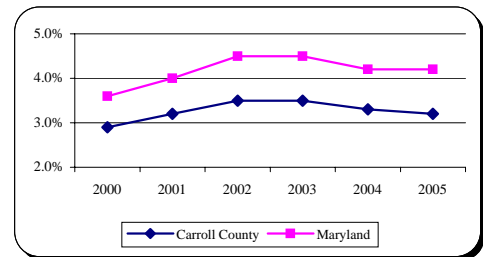
All figures are based on current dollars.
Source: Comptroller of Maryland Income Tax Summary Report



Average Annual Unemployment Rates

Year	Carroll County	Maryland
2000	2.9%	3.6%
2001	3.2%	4.0%
2002	3.5%	4.5%
2003	3.5%	4.5%
2004	3.3%	4.2%
2005	3.2%	4.2%

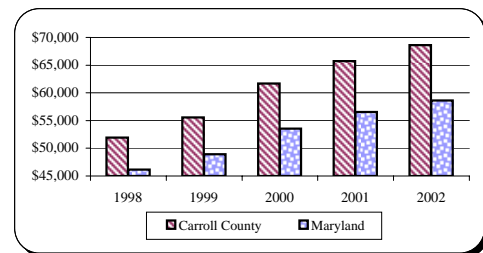
Source: MD Department of Labor, Licensing and Regulation



Median Household Income

Year	Carroll County	Maryland
1998	\$51,902	\$46,150
1999	55,556	48,935
2000	61,675	53,541
2001	65,699	56,545
2002	68,600	58,600

All figures adjusted to 2002 dollars
Source: 2004 Carroll County Credit Rating



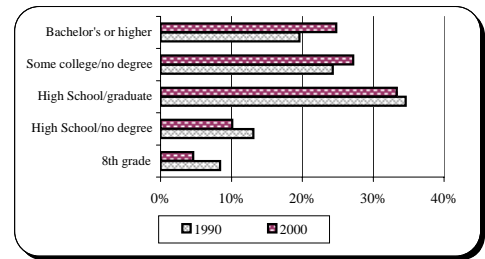
* Indicates estimate

Financial and Demographic Data

Education Attainment

Level	1990	2000
8th grade	8.4%	4.6%
High School/no degree	13.1%	10.1%
High School/graduate	34.6%	33.3%
Some college/no degree	24.3%	27.2%
Bachelor's or higher	19.6%	24.8%

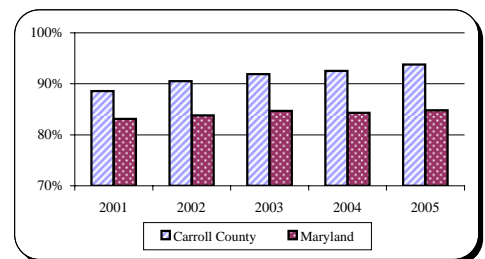
Source: US Census Bureau



Graduation Rates

Year	Carroll County	Maryland
2001	88.6%	83.1%
2002	90.5%	83.8%
2003	91.9%	84.7%
2004	92.5%	84.3%
2005	93.8%	84.8%

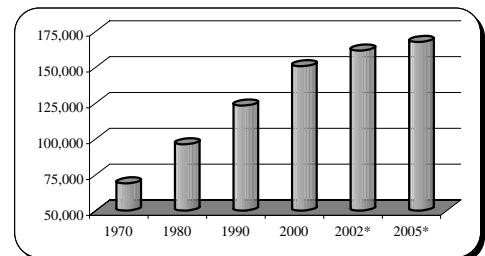
Source: MD Department of Education, 2005 MSDE Report Card



Population

Year	Carroll County
Apr. 1, 1970 Census	69,006
Apr. 1, 1980 Census	96,356
Apr. 1, 1990 Census	123,372
Apr. 1, 2000 Census	150,897
Dec. 31, 2002 Estimate*	161,808
Dec. 31, 2005 Estimate*	167,730

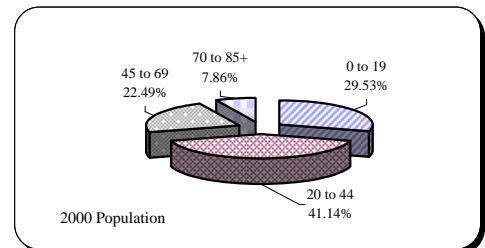
Source: MD and Carroll County Departments of Planning



Population By Age Composition in Year 2000

Age Group	1990	2000
0 to 19	36,434	45,623
20 to 44	50,752	52,889
45 to 69	27,750	40,524
70 to 85 and Older	8,436	11,861
Total	123,372	150,897

Source: US Census Bureau and Carroll County Department of Planning

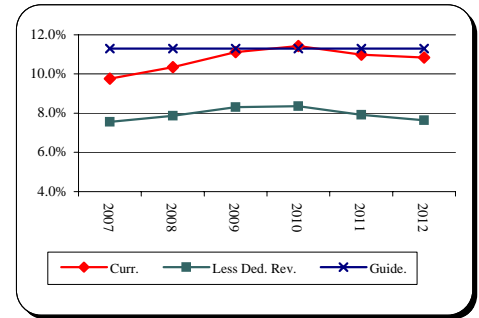


* Indicates estimate

Financial and Demographic Data

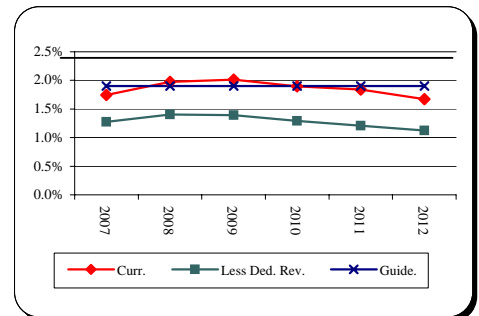
General Fund Debt Service/General Fund Revenue

<u>Fiscal Year</u>	<u>Current Position</u>	Less Dedicated		<u>County Guideline</u>
		<u>Revenue and Supported DS</u>		
2007	9.8%	7.6%		11.3%
2008	10.4%	7.9%		11.3%
2009	11.1%	8.3%		11.3%
2010	11.4%	8.4%		11.3%
2011	11.0%	7.9%		11.3%
2012	10.8%	7.6%		11.3%
2013	9.8%	6.8%		11.3%
2014	9.0%	6.2%		11.3%
2015	8.1%	5.6%		11.3%



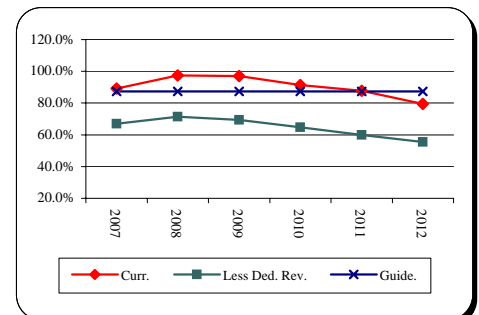
General Fund Debt/Assessable Base

<u>Fiscal Year</u>	<u>Current Position</u>	Less Dedicated		<u>County Guideline</u>
		<u>Revenue and Supported Debt</u>		
2007	1.7%	1.3%		1.9%
2008	2.0%	1.4%		1.9%
2009	2.0%	1.4%		1.9%
2010	1.9%	1.3%		1.9%
2011	1.8%	1.2%		1.9%
2012	1.7%	1.1%		1.9%
2013	1.4%	1.0%		1.9%
2014	1.2%	0.8%		1.9%
2015	1.0%	0.7%		1.9%



General Fund Debt/General Fund Revenue

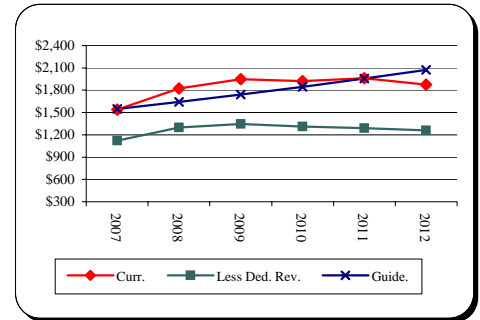
<u>Fiscal Year</u>	<u>Current Position</u>	Less Dedicated		<u>County Guideline</u>
		<u>Revenue and Supported Debt</u>		
2007	89.1%	66.9%		87.4%
2008	97.4%	71.5%		87.4%
2009	97.1%	69.5%		87.4%
2010	91.4%	64.8%		87.4%
2011	87.8%	60.0%		87.4%
2012	79.5%	55.4%		87.4%
2013	68.3%	47.3%		87.4%
2014	58.3%	40.3%		87.4%
2015	58.3%	33.8%		87.4%



Financial and Demographic Data

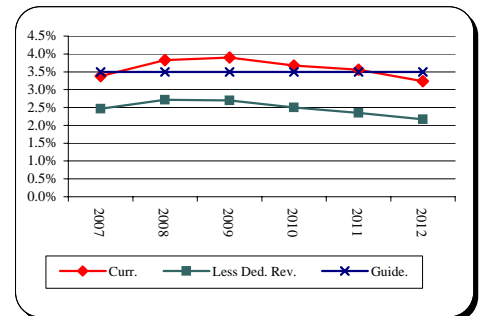
General Fund Debt/Capita

<u>Fiscal Year</u>	<u>Current Position</u>	<u>Less Dedicated Revenue and Supported Debt</u>	<u>County Guideline</u>
2007	1,539	1,122	\$1,550
2008	1,824	1,297	1,643
2009	1,948	1,347	1,742
2010	1,922	1,311	1,846
2011	1,961	1,291	1,957
2012	1,875	1,258	2,074
2013	1,686	1,128	2,199
2014	1,507	1,007	2,331
2015	1,331	888	2,470



General Fund Debt/Personal Income

<u>Fiscal Year</u>	<u>Current Position</u>	<u>Less Dedicated Revenue and Supported Debt</u>	<u>County Guideline</u>
2007	3.4%	2.5%	3.5%
2008	3.8%	2.7%	3.5%
2009	3.9%	2.7%	3.5%
2010	3.7%	2.5%	3.5%
2011	3.6%	2.3%	3.5%
2012	3.2%	2.2%	3.5%
2013	2.8%	1.9%	3.5%
2014	2.4%	1.6%	3.5%
2015	2.0%	1.3%	3.5%



Source: Bureau of Economic Analysis

Total Debt Service/General Fund Revenue

<u>Fiscal Year</u>	<u>Current Position</u>	<u>Less Dedicated Revenue and Supported DS</u>	<u>County Guideline</u>
2007	11.0%	8.0%	12.0%
2008	11.7%	8.3%	12.0%
2009	12.3%	8.7%	12.0%
2010	12.6%	8.7%	12.0%
2011	12.1%	8.2%	12.0%
2012	11.9%	8.0%	12.0%
2013	10.6%	7.1%	12.0%
2014	9.7%	6.5%	12.0%
2015	8.8%	5.8%	12.0%

