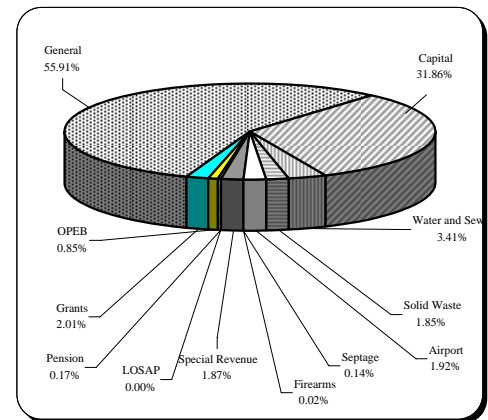


Financial and Demographic Data

FY 08 Budget By Fund

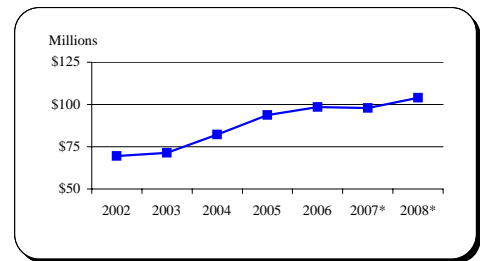
| <u>Fund Type</u> | <u>FY 08</u> |
|------------------|----------------------|
| General | \$328,372,000 |
| Capital | 187,127,907 |
| Water and Sewer | 20,045,896 |
| Solid Waste | 10,874,660 |
| Airport | 11,291,222 |
| Firearms | 40,000 |
| Septage | 832,750 |
| Special Revenue | 10,985,500 |
| LOSAP | 1,000,000 |
| Pension | 985,423 |
| OPEB | 4,966,200 |
| Grants | 11,798,727 |
| Total | \$588,320,284 |



Income Tax Collected-Operating

| <u>Year</u> | <u>Taxes Collected</u> | <u>% Change</u> |
|-------------|------------------------|-----------------|
| 2002 | 69,517,735 | 3.4% |
| 2003 | 71,480,051 | 2.8% |
| 2004 | 82,191,515 | 15.0% |
| 2005 | 93,818,463 | 14.1% |
| 2006 | 98,577,624 | 5.1% |
| 2007* | 98,000,000 | -0.6% |
| 2008* | 104,000,000 | 6.1% |

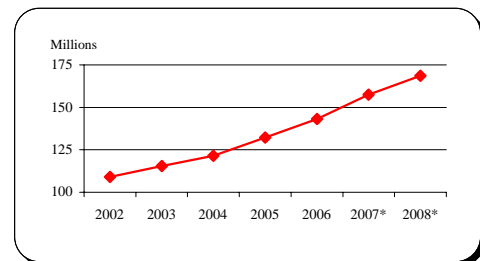
Tax rate increased from 2.85% to 3.05% effective Jan 1, 2004.
 Because income taxes are based on a calendar year and the County's budget is based on a July 1 through June 30 fiscal year, only 1/2 of the collections of FY 04 are affected.
 9.09% of income tax revenue is directly appropriated to the CIP.
 Source: FY 02-FY 06 Carroll County CAFR



Total Local Property Tax Collected

| <u>Year</u> | <u>Taxes Collected</u> | <u>% Change</u> |
|-------------|------------------------|-----------------|
| 2002 | 109,026,120 | 9.0% |
| 2003 | 115,417,116 | 5.9% |
| 2004 | 121,407,052 | 5.2% |
| 2005 | 132,226,766 | 8.9% |
| 2006 | 143,192,552 | 8.3% |
| 2007* | 157,556,100 | 10.0% |
| 2008* | 168,574,900 | 7.0% |

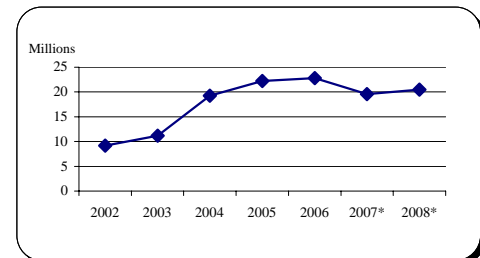
Tax rate is \$1.048 for Real Property and 2.62% for Personal Property
 Source: FY 02-FY 06 Carroll County CAFR



Recordation Tax Collected

| <u>Year</u> | <u>Base</u> | <u>% Change</u> |
|-------------|-------------|-----------------|
| 2002 | 9,157,726 | 30.2% |
| 2003 | 11,152,453 | 21.8% |
| 2004 | 19,238,898 | 72.5% |
| 2005 | 22,207,072 | 15.4% |
| 2006 | 22,782,302 | 2.6% |
| 2007* | 19,600,000 | -14.0% |
| 2008* | 20,500,000 | 4.6% |

Beginning in FY 04, tax rate increased from \$3.50 per \$500 to \$5.00 per \$500.
 Source: FY 02-FY 06 Carroll County CAFR



* Indicates estimate

Financial and Demographic Data

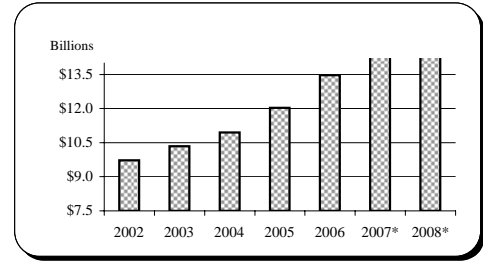
Assessable Base-Real and Personal Property

| Year | Base | % Change |
|-------|----------------|----------|
| 2002 | 9,726,556,899 | 6.0% |
| 2003 | 10,340,867,012 | 6.3% |
| 2004 | 10,948,754,959 | 5.9% |
| 2005 | 12,034,458,190 | 9.9% |
| 2006 | 13,470,143,079 | 11.9% |
| 2007* | 15,453,866,000 | 14.7% |
| 2008* | 17,780,344,000 | 15.1% |

All years are expressed at 100% of assessed value.

Source: FY 02-FY 06 Carroll County CAFR

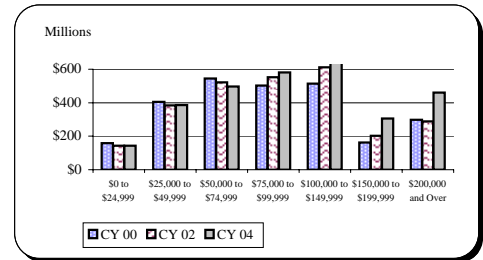
FY 07-08 Maryland State Department of Assessment and Taxation



Net Taxable Income

| Income Range | CY 00 | CY 02 | CY 04 |
|------------------------|---------------|---------------|---------------|
| \$0 to \$24,999 | \$159,512,609 | \$143,812,972 | \$142,600,510 |
| \$25,000 to \$49,999 | 406,003,679 | 384,784,150 | 385,916,181 |
| \$50,000 to \$74,999 | 544,537,989 | 522,478,280 | 497,747,551 |
| \$75,000 to \$99,999 | 502,317,007 | 551,668,546 | 580,845,764 |
| \$100,000 to \$149,999 | 513,896,649 | 610,887,788 | 752,517,723 |
| \$150,000 to \$199,999 | 161,712,396 | 203,196,007 | 304,860,906 |
| \$200,000 and Over | 298,245,725 | 288,345,573 | 460,386,592 |

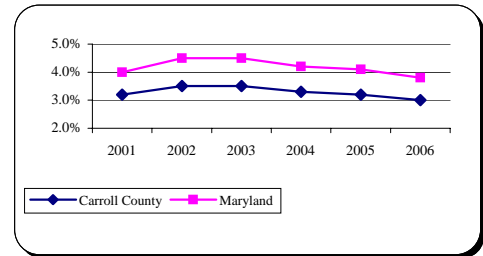
Source: Comptroller of Maryland Income Tax Summary Report



Average Annual Unemployment Rates

| Year | Carroll County | Maryland |
|------|----------------|----------|
| 2001 | 3.2% | 4.0% |
| 2002 | 3.5% | 4.5% |
| 2003 | 3.5% | 4.5% |
| 2004 | 3.3% | 4.2% |
| 2005 | 3.2% | 4.1% |
| 2006 | 3.0% | 3.8% |

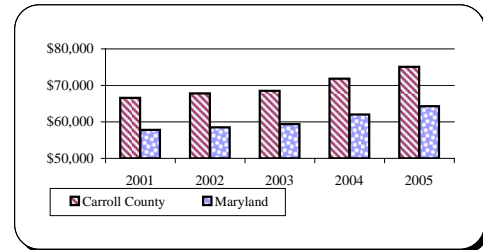
Source: MD Department of Labor, Licensing and Regulation



Median Household Income

| Year | Carroll County | Maryland |
|------|----------------|----------|
| 2001 | \$66,600 | \$57,800 |
| 2002 | 67,850 | 58,550 |
| 2003 | 68,500 | 59,350 |
| 2004 | 71,850 | 62,000 |
| 2005 | 75,050 | 64,300 |

Source: 2006 Carroll County Credit Rating



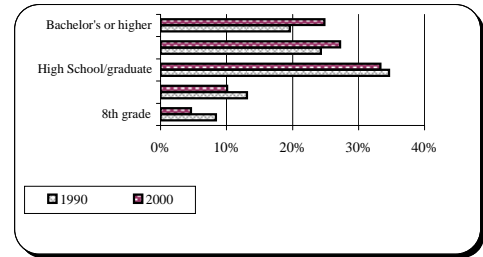
* Indicates estimate

Financial and Demographic Data

Education Attainment

| Level | 1990 | 2000 |
|------------------------|-------|-------|
| 8th grade | 8.4% | 4.6% |
| High School/no degree | 13.1% | 10.1% |
| High School/graduate | 34.6% | 33.3% |
| Some college/no degree | 24.3% | 27.2% |
| Bachelor's or higher | 19.6% | 24.8% |

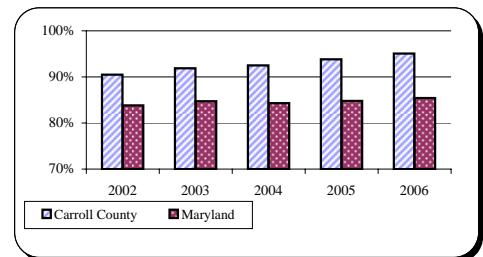
Source: US Census Bureau



Graduation Rates

| Year | Carroll County | Maryland |
|------|----------------|----------|
| 2002 | 90.5% | 83.8% |
| 2003 | 91.9% | 84.7% |
| 2004 | 92.5% | 84.3% |
| 2005 | 93.8% | 84.8% |
| 2006 | 95.1% | 85.4% |

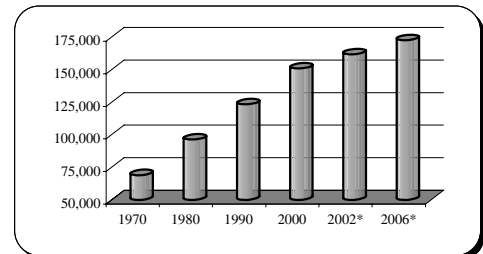
Source: MD Department of Education, 2006 MSDE Report Card



Population

| Year | Carroll County |
|-------------------------|----------------|
| Apr. 1, 1970 Census | 69,006 |
| Apr. 1, 1980 Census | 96,356 |
| Apr. 1, 1990 Census | 123,372 |
| Apr. 1, 2000 Census | 150,897 |
| Dec. 31, 2002 Estimate* | 161,808 |
| Dec. 31, 2006 Estimate* | 172,641 |

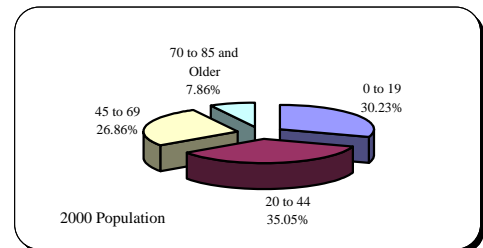
Source: MD and Carroll County Departments of Planning



Population By Age Composition in Year 2000

| Age Group | 1990 | 2000 |
|--------------------|---------|---------|
| 0 to 19 | 36,434 | 45,623 |
| 20 to 44 | 50,752 | 52,889 |
| 45 to 69 | 27,750 | 40,524 |
| 70 to 85 and Older | 8,436 | 11,861 |
| Total | 123,372 | 150,897 |

Source: US Census Bureau and Carroll County Department of Planning

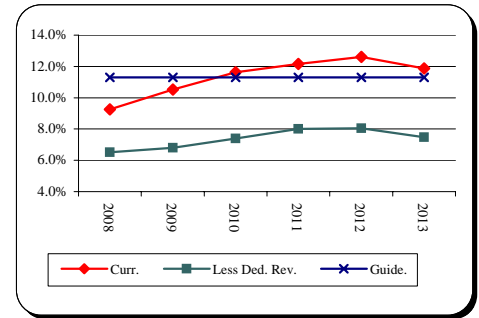


* Indicates estimate

Financial and Demographic Data

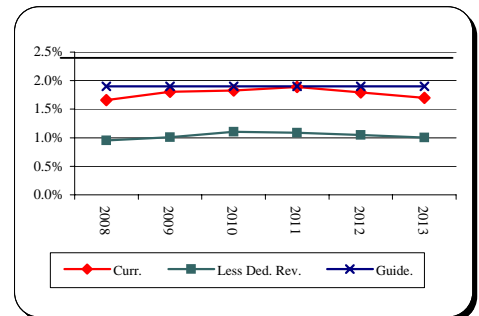
General Fund Debt Service/General Fund Revenue

| <u>Fiscal Year</u> | <u>Current Position</u> | Less Dedicated <u>Revenue and Supported DS</u> | <u>County Guideline</u> |
|--------------------|-------------------------|---|-------------------------|
| 2008 | 9.3% | 6.5% | 11.3% |
| 2009 | 10.5% | 6.8% | 11.3% |
| 2010 | 11.6% | 7.4% | 11.3% |
| 2011 | 12.2% | 8.0% | 11.3% |
| 2012 | 12.6% | 8.1% | 11.3% |
| 2013 | 11.9% | 7.5% | 11.3% |
| 2014 | 11.6% | 7.4% | 11.3% |
| 2015 | 10.6% | 6.7% | 11.3% |
| 2016 | 9.5% | 6.0% | 11.3% |



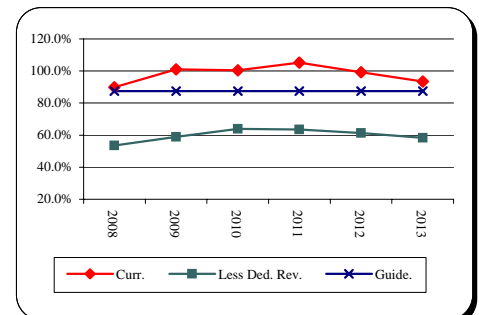
General Fund Debt/Assessable Base

| <u>Fiscal Year</u> | <u>Current Position</u> | Less Dedicated <u>Revenue and Supported Debt</u> | <u>County Guideline</u> |
|--------------------|-------------------------|---|-------------------------|
| 2008 | 1.7% | 1.0% | 1.9% |
| 2009 | 1.8% | 1.0% | 1.9% |
| 2010 | 1.8% | 1.1% | 1.9% |
| 2011 | 1.9% | 1.1% | 1.9% |
| 2012 | 1.8% | 1.0% | 1.9% |
| 2013 | 1.7% | 1.0% | 1.9% |
| 2014 | 1.5% | 0.9% | 1.9% |
| 2015 | 1.2% | 0.7% | 1.9% |
| 2016 | 1.0% | 0.6% | 1.9% |



General Fund Debt/General Fund Revenue

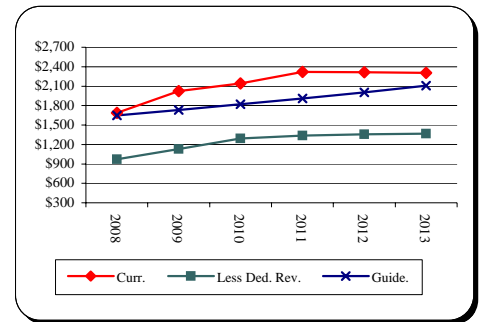
| <u>Fiscal Year</u> | <u>Current Position</u> | Less Dedicated <u>Revenue and Supported Debt</u> | <u>County Guideline</u> |
|--------------------|-------------------------|---|-------------------------|
| 2008 | 89.8% | 53.5% | 87.4% |
| 2009 | 101.1% | 59.0% | 87.4% |
| 2010 | 100.4% | 63.8% | 87.4% |
| 2011 | 105.1% | 63.6% | 87.4% |
| 2012 | 99.2% | 61.4% | 87.4% |
| 2013 | 93.5% | 58.3% | 87.4% |
| 2014 | 81.1% | 50.3% | 87.4% |
| 2015 | 69.2% | 42.6% | 87.4% |
| 2016 | 58.4% | 35.6% | 87.4% |



Financial and Demographic Data

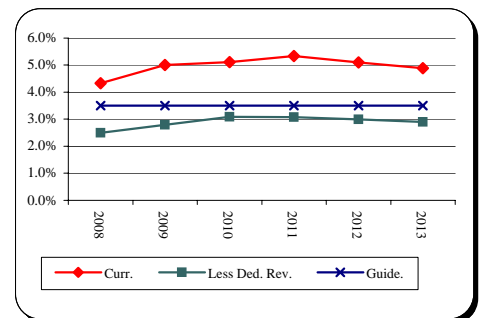
General Fund Debt/Capita

| <u>Fiscal Year</u> | <u>Current Position</u> | <u>Less Dedicated Revenue and Supported Debt</u> | <u>County Guideline</u> |
|--------------------|-------------------------|--|-------------------------|
| 2008 | 1,685 | 971 | \$1,650 |
| 2009 | 2,021 | 1,129 | 1,733 |
| 2010 | 2,141 | 1,294 | 1,819 |
| 2011 | 2,319 | 1,336 | 1,910 |
| 2012 | 2,313 | 1,355 | 2,006 |
| 2013 | 2,304 | 1,365 | 2,106 |
| 2014 | 2,090 | 1,237 | 2,211 |
| 2015 | 1,867 | 1,099 | 2,322 |
| 2016 | 1,650 | 967 | 2,438 |



General Fund Debt/Personal Income

| <u>Fiscal Year</u> | <u>Current Position</u> | <u>Less Dedicated Revenue and Supported Debt</u> | <u>County Guideline</u> |
|--------------------|-------------------------|--|-------------------------|
| 2008 | 4.3% | 2.5% | 3.5% |
| 2009 | 5.0% | 2.8% | 3.5% |
| 2010 | 5.1% | 3.1% | 3.5% |
| 2011 | 5.3% | 3.1% | 3.5% |
| 2012 | 5.1% | 3.0% | 3.5% |
| 2013 | 4.9% | 2.9% | 3.5% |
| 2014 | 4.3% | 2.5% | 3.5% |
| 2015 | 3.6% | 2.1% | 3.5% |
| 2016 | 3.1% | 1.8% | 3.5% |



Source: Bureau of Economic Analysis

Total Debt Service/General Fund Revenue

| <u>Fiscal Year</u> | <u>Current Position</u> | <u>Less Dedicated Revenue and Supported DS</u> | <u>County Guideline</u> |
|--------------------|-------------------------|--|-------------------------|
| 2008 | 10.2% | 6.9% | 12.0% |
| 2009 | 11.5% | 7.1% | 12.0% |
| 2010 | 12.5% | 7.7% | 12.0% |
| 2011 | 13.0% | 8.3% | 12.0% |
| 2012 | 13.4% | 8.3% | 12.0% |
| 2013 | 12.4% | 7.7% | 12.0% |
| 2014 | 12.1% | 7.6% | 12.0% |
| 2015 | 11.1% | 6.9% | 12.0% |
| 2016 | 10.0% | 6.2% | 12.0% |

