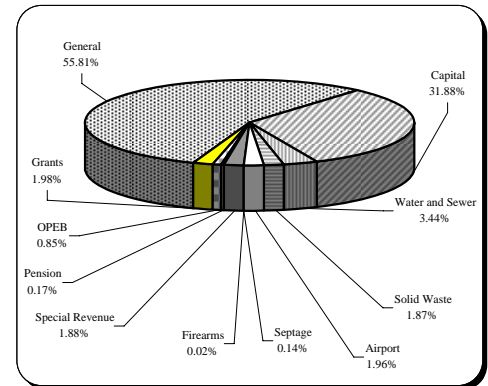


Financial and Demographic Data

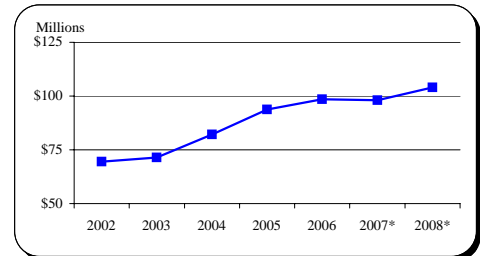
FY 08 Budget By Fund

Fund Type	FY 08
General	\$325,275,748
Capital	185,808,657
Water and Sewer	20,045,896
Solid Waste	10,874,660
Airport	11,436,192
Firearms	40,000
Septage	832,750
Special Revenue	10,985,500
Pension	985,423
OPEB	4,966,200
Grants	11,542,565
Total	\$582,793,590



Income Tax Collected-Operating

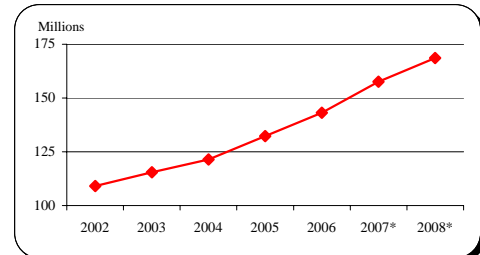
Year	Taxes Collected	% Change
2002	69,517,735	3.4%
2003	71,480,051	2.8%
2004	82,191,515	15.0%
2005	93,818,463	14.1%
2006	98,577,624	5.1%
2007*	98,000,000	-0.6%
2008*	104,000,000	6.1%



Tax rate increased from 2.85% to 3.05% effective Jan 1, 2004.
 Because income taxes are based on a calendar year and the County's budget is based on a July 1 through June 30 fiscal year, only 1/2 of the collections of FY 04 are affected.
 9.09% of income tax revenue is directly appropriated to the CIP.
 Source: FY 02-FY 06 Carroll County CAFR

Total Local Property Tax Collected

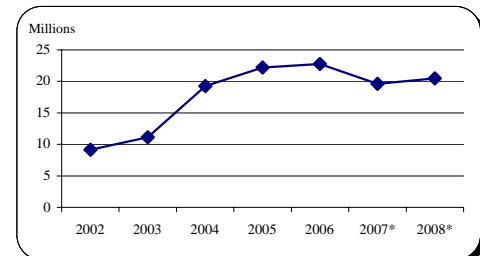
Year	Taxes Collected	% Change
2002	109,026,120	9.0%
2003	115,417,116	5.9%
2004	121,407,052	5.2%
2005	132,226,766	8.9%
2006	143,192,552	8.3%
2007*	157,556,100	10.0%
2008*	168,574,900	7.0%



Tax rate is \$1.048 for Real Property and 2.62% for Personal Property
 Source: FY 02-FY 06 Carroll County CAFR

Recordation Tax Collected

Year	Base	% Change
2002	9,157,726	30.2%
2003	11,152,453	21.8%
2004	19,238,898	72.5%
2005	22,207,072	15.4%
2006	22,782,302	2.6%
2007*	19,600,000	-14.0%
2008*	20,500,000	4.6%



Beginning in FY 04, tax rate increased from \$3.50 per \$500 to \$5.00 per \$500.
 Source: FY 02-FY 06 Carroll County CAFR

* Indicates estimate

Financial and Demographic Data

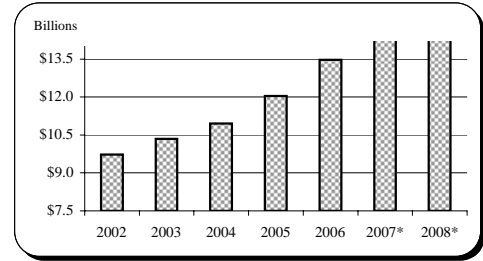
Assessable Base-Real and Personal Property

Year	Base	% Change
2002	9,726,556,899	6.0%
2003	10,340,867,012	6.3%
2004	10,948,754,959	5.9%
2005	12,034,458,190	9.9%
2006	13,470,143,079	11.9%
2007*	15,453,866,000	14.7%
2008*	17,780,344,000	15.1%

All years are expressed at 100% of assessed value.

Source: FY 02-FY 06 Carroll County CAFR

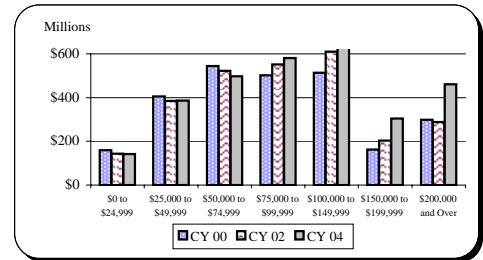
FY 07-08 Maryland State Department of Assessment and Taxation



Net Taxable Income

Income Range	CY 00	CY 02	CY 04
\$0 to \$24,999	\$159,512,609	\$143,812,972	\$142,600,510
\$25,000 to \$49,999	406,003,679	384,784,150	385,916,181
\$50,000 to \$74,999	544,537,989	522,478,280	497,747,551
\$75,000 to \$99,999	502,317,007	551,668,546	580,845,764
\$100,000 to \$149,999	513,896,649	610,887,788	752,517,723
\$150,000 to \$199,999	161,712,396	203,196,007	304,860,906
\$200,000 and Over	298,245,725	288,345,573	460,386,592

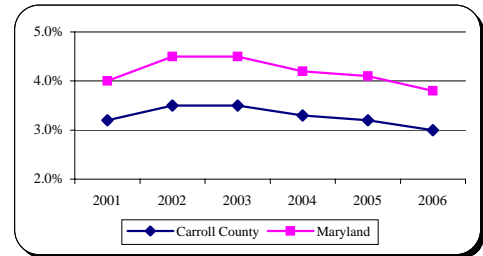
Source: Comptroller of Maryland Income Tax Summary Report



Average Annual Unemployment Rates

Year	Carroll County	Maryland
2001	3.2%	4.0%
2002	3.5%	4.5%
2003	3.5%	4.5%
2004	3.3%	4.2%
2005	3.2%	4.1%
2006	3.0%	3.8%

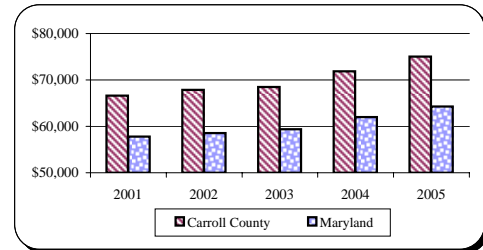
Source: MD Department of Labor, Licensing and Regulation



Median Household Income

Year	Carroll County	Maryland
2001	\$66,600	\$57,800
2002	67,850	58,550
2003	68,500	59,350
2004	71,850	62,000
2005	75,050	64,300

Source: 2006 Carroll County Credit Rating



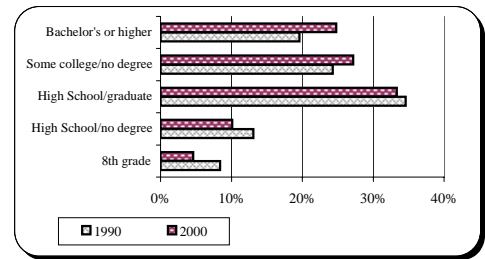
* Indicates estimate

Financial and Demographic Data

Education Attainment

Level	1990	2000
8th grade	8.4%	4.6%
High School/no degree	13.1%	10.1%
High School/graduate	34.6%	33.3%
Some college/no degree	24.3%	27.2%
Bachelor's or higher	19.6%	24.8%

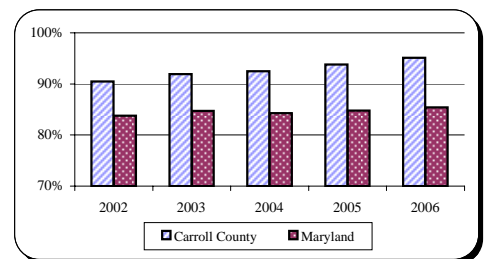
Source: US Census Bureau



Graduation Rates

Year	Carroll County	Maryland
2002	90.5%	83.8%
2003	91.9%	84.7%
2004	92.5%	84.3%
2005	93.8%	84.8%
2006	95.1%	85.4%

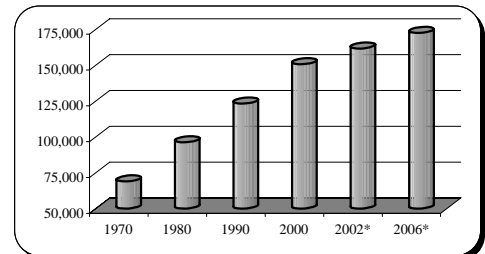
Source: MD Department of Education, 2006 MSDE Report Card



Population

Year	Carroll County
Apr. 1, 1970 Census	69,006
Apr. 1, 1980 Census	96,356
Apr. 1, 1990 Census	123,372
Apr. 1, 2000 Census	150,897
Dec. 31, 2002 Estimate*	161,808
Dec. 31, 2006 Estimate*	172,641

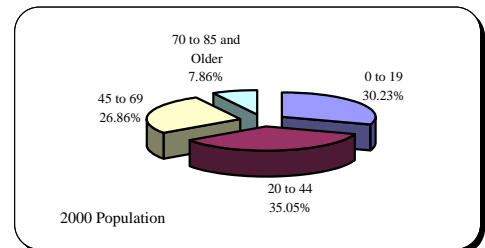
Source: MD and Carroll County Departments of Planning



Population By Age Composition in Year 2000

Age Group	1990	2000
0 to 19	36,434	45,623
20 to 44	50,752	52,889
45 to 69	27,750	40,524
70 to 85 and Older	8,436	11,861
Total	123,372	150,897

Source: US Census Bureau and Carroll County Department of Planning

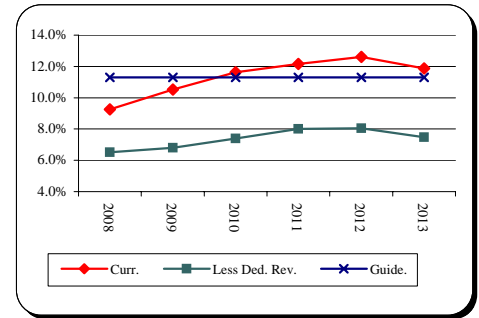


* Indicates estimate

Financial and Demographic Data

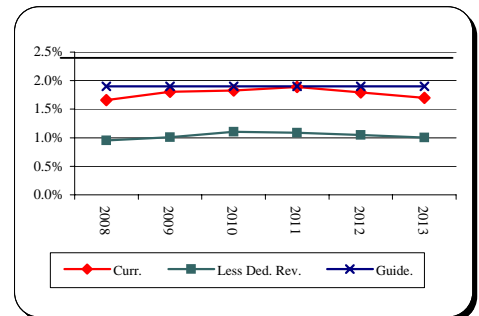
General Fund Debt Service/General Fund Revenue

<u>Fiscal Year</u>	<u>Current Position</u>	Less Dedicated <u>Revenue and Supported DS</u>	<u>County Guideline</u>
2008	9.3%	6.5%	11.3%
2009	10.5%	6.8%	11.3%
2010	11.6%	7.4%	11.3%
2011	12.2%	8.0%	11.3%
2012	12.6%	8.1%	11.3%
2013	11.9%	7.5%	11.3%
2014	11.6%	7.4%	11.3%
2015	10.6%	6.7%	11.3%
2016	9.5%	6.0%	11.3%



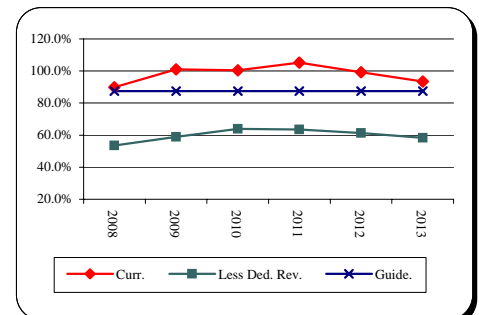
General Fund Debt/Assessable Base

<u>Fiscal Year</u>	<u>Current Position</u>	Less Dedicated <u>Revenue and Supported Debt</u>	<u>County Guideline</u>
2008	1.7%	1.0%	1.9%
2009	1.8%	1.0%	1.9%
2010	1.8%	1.1%	1.9%
2011	1.9%	1.1%	1.9%
2012	1.8%	1.0%	1.9%
2013	1.7%	1.0%	1.9%
2014	1.5%	0.9%	1.9%
2015	1.2%	0.7%	1.9%
2016	1.0%	0.6%	1.9%



General Fund Debt/General Fund Revenue

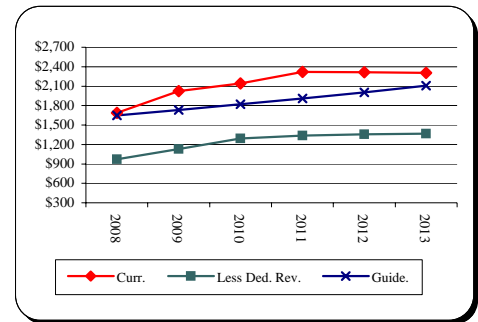
<u>Fiscal Year</u>	<u>Current Position</u>	Less Dedicated <u>Revenue and Supported Debt</u>	<u>County Guideline</u>
2008	89.8%	53.5%	87.4%
2009	101.1%	59.0%	87.4%
2010	100.4%	63.8%	87.4%
2011	105.1%	63.6%	87.4%
2012	99.2%	61.4%	87.4%
2013	93.5%	58.3%	87.4%
2014	81.1%	50.3%	87.4%
2015	69.2%	42.6%	87.4%
2016	58.4%	35.6%	87.4%



Financial and Demographic Data

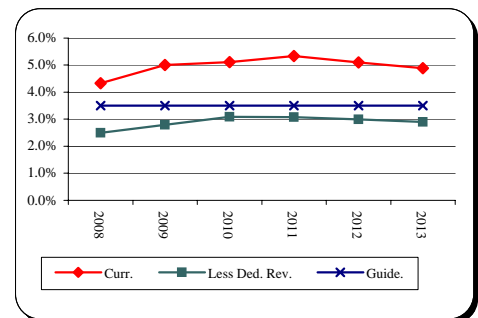
General Fund Debt/Capita

<u>Fiscal Year</u>	<u>Current Position</u>	<u>Less Dedicated Revenue and Supported Debt</u>	<u>County Guideline</u>
2008	1,685	971	\$1,650
2009	2,021	1,129	1,733
2010	2,141	1,294	1,819
2011	2,319	1,336	1,910
2012	2,313	1,355	2,006
2013	2,304	1,365	2,106
2014	2,090	1,237	2,211
2015	1,867	1,099	2,322
2016	1,650	967	2,438



General Fund Debt/Personal Income

<u>Fiscal Year</u>	<u>Current Position</u>	<u>Less Dedicated Revenue and Supported Debt</u>	<u>County Guideline</u>
2008	4.3%	2.5%	3.5%
2009	5.0%	2.8%	3.5%
2010	5.1%	3.1%	3.5%
2011	5.3%	3.1%	3.5%
2012	5.1%	3.0%	3.5%
2013	4.9%	2.9%	3.5%
2014	4.3%	2.5%	3.5%
2015	3.6%	2.1%	3.5%
2016	3.1%	1.8%	3.5%



Source: Bureau of Economic Analysis

Total Debt Service/General Fund Revenue

<u>Fiscal Year</u>	<u>Current Position</u>	<u>Less Dedicated Revenue and Supported DS</u>	<u>County Guideline</u>
2008	10.2%	6.9%	12.0%
2009	11.5%	7.1%	12.0%
2010	12.5%	7.7%	12.0%
2011	13.0%	8.3%	12.0%
2012	13.4%	8.3%	12.0%
2013	12.4%	7.7%	12.0%
2014	12.1%	7.6%	12.0%
2015	11.1%	6.9%	12.0%
2016	10.0%	6.2%	12.0%

