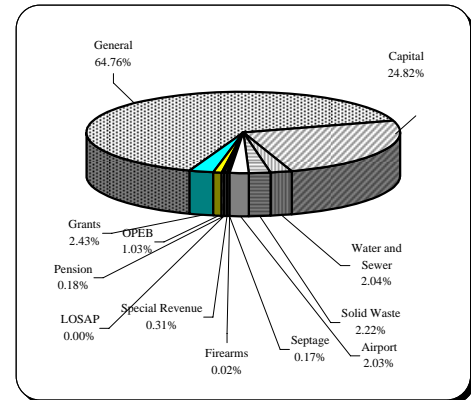


# Financial and Demographic Data

## FY 09 Budget By Fund

<u>Fund Type</u>	<u>FY 09</u>
General	\$353,000,000
Capital	135,297,971
Water and Sewer	11,097,950
Solid Waste	12,115,710
Airport	11,056,160
Firearms	75,100
Septage	919,200
Special Revenue	1,712,350
LOSAP	0
Pension	958,230
OPEB	5,615,800
Grants	13,269,088
<b>Total</b>	<b>\$545,117,559</b>



## Income Tax Collected-Operating

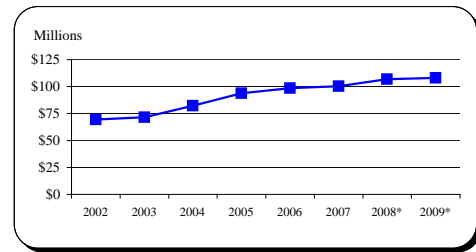
<u>Year</u>	<u>Taxes Collected</u>	<u>% Change</u>
2002	\$69,517,735	3.4%
2003	71,480,051	2.8%
2004	82,191,515	15.0%
2005	93,818,463	14.1%
2006	98,577,624	5.1%
2007	100,272,976	1.7%
2008*	107,000,000	6.7%
2009*	108,000,000	0.9%

Tax rate increased from 2.85% to 3.05% effective Jan 1, 2004.

Because income taxes are based on a calendar year and the County's budget is based on a July 1 through June 30 fiscal year, only 1/2 of the collections of FY 04 are affected.

9.09% of income tax revenue is directly appropriated to the CIP.

Source: FY 02-FY 07 Carroll County CAFR

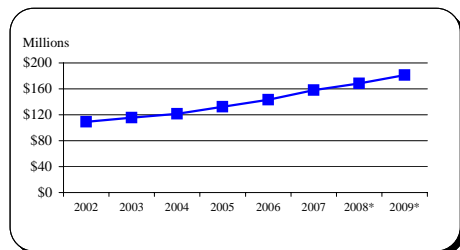


## Total Local Property Tax Collected

<u>Year</u>	<u>Taxes Collected</u>	<u>% Change</u>
2002	\$109,026,120	9.0%
2003	115,417,116	5.9%
2004	121,407,052	5.2%
2005	132,226,766	8.9%
2006	143,192,552	8.3%
2007	158,112,936	10.4%
2008*	168,574,900	6.6%
2009*	181,232,306	7.5%

Tax rate is \$1.048 for Real Property and 2.62% for Personal Property

Source: FY 02-FY 07 Carroll County CAFR

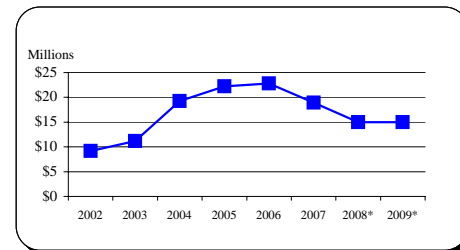


## Recordation Tax Collected

<u>Year</u>	<u>Base</u>	<u>% Change</u>
2002	\$9,157,726	30.2%
2003	11,152,453	21.8%
2004	19,238,898	72.5%
2005	22,207,072	15.4%
2006	22,782,302	2.6%
2007	18,902,094	-17.0%
2008*	15,000,000	-20.6%
2009*	15,000,000	0.0%

Beginning in FY 04, tax rate increased from \$3.50 per \$500 to \$5.00 per \$500.

Source: FY 02-FY 07 Carroll County CAFR



\* Indicates estimate

# Financial and Demographic Data

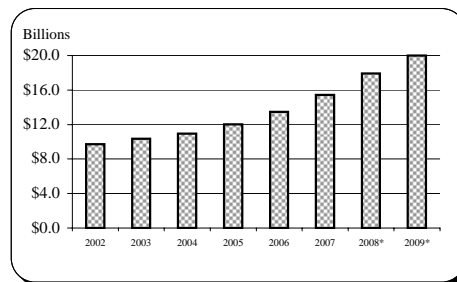
## Assessable Base-Real and Personal Property

Year	Base	% Change
2002	\$9,726,556,899	6.0%
2003	10,340,867,012	6.3%
2004	10,948,754,959	5.9%
2005	12,034,458,190	9.9%
2006	13,470,143,079	11.9%
2007	15,441,306,101	14.6%
2008*	17,928,478,000	16.1%
2009*	20,007,743,000	11.6%

All years are expressed at 100% of assessed value.

Source: FY 02-FY 07 Carroll County CAFR

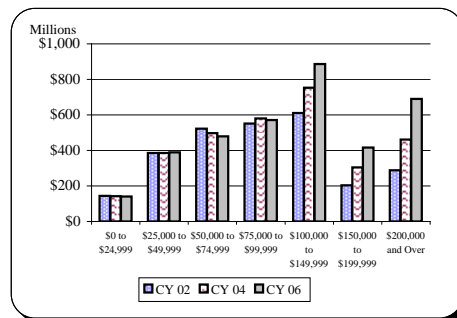
FY 08-09 Maryland State Department of Assessment and Taxation



## Net Taxable Income

Income Range	CY 02	CY 04	CY 06
\$0 to \$24,999	\$143,812,972	\$142,600,510	\$139,676,130
\$25,000 to \$49,999	384,784,150	385,916,181	389,834,803
\$50,000 to \$74,999	522,478,280	497,747,551	479,697,529
\$75,000 to \$99,999	551,668,546	580,845,764	570,854,376
\$100,000 to \$149,999	610,887,788	752,517,723	886,725,207
\$150,000 to \$199,999	203,196,007	304,860,906	416,376,892
\$200,000 and Over	288,345,573	460,386,592	690,155,799

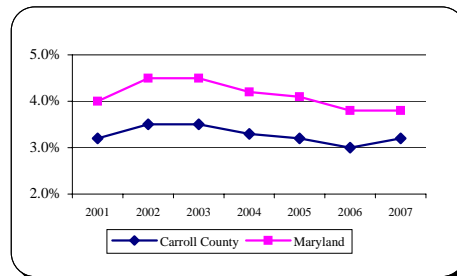
Source: 2006 Comptroller of Maryland Income Tax Summary Report



## Average Annual Unemployment Rates

Year	Carroll County	Maryland
2001	3.2%	4.0%
2002	3.5%	4.5%
2003	3.5%	4.5%
2004	3.3%	4.2%
2005	3.2%	4.1%
2006	3.0%	3.8%
2007	3.2%	3.8%

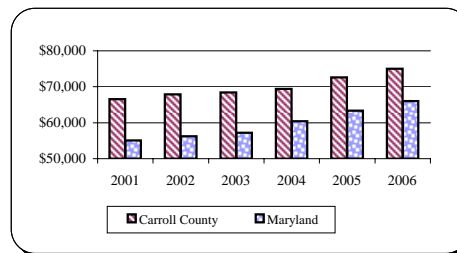
Source: MD Department of Labor, Licensing and Regulation



## Median Household Income

Year	Carroll County	Maryland
2001	\$66,600	\$55,050
2002	67,850	56,200
2003	68,450	57,200
2004	69,450	60,450
2005	72,650	63,350
2006	75,050	66,060

Source: 2007 Carroll County Credit Rating



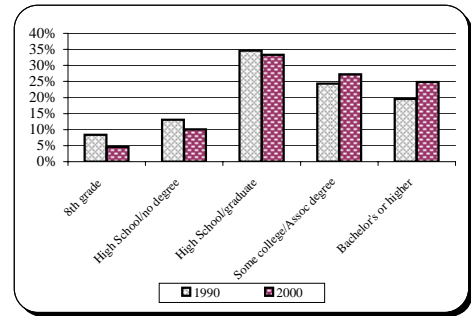
\* Indicates estimate

# Financial and Demographic Data

## Education Attainment

<u>Level</u>	<u>1990</u>	<u>2000</u>
8th grade	8.4%	4.6%
High School/no degree	13.1%	10.1%
High School/graduate	34.6%	33.3%
Some college/Assoc degree	24.3%	27.2%
Bachelor's or higher	19.6%	24.8%

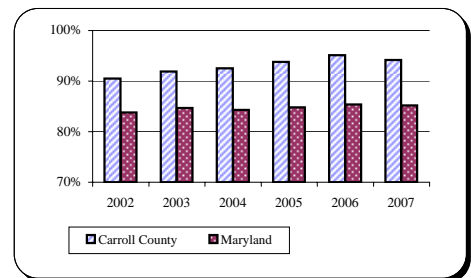
Source: US Census Bureau



## Graduation Rates

<u>Year</u>	<u>Carroll County</u>	<u>Maryland</u>
2002	90.5%	83.8%
2003	91.9%	84.7%
2004	92.5%	84.3%
2005	93.8%	84.8%
2006	95.1%	85.4%
2007	94.2%	85.2%

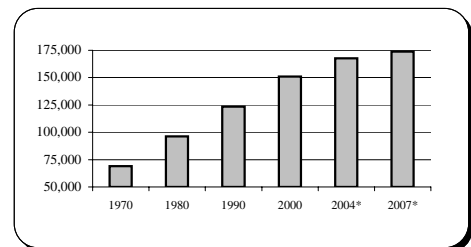
Source: MD Department of Education, 2007 MSDE Report Card



## Population

<u>Year</u>	<u>Carroll County</u>
Apr. 1, 1970 Census	69,006
Apr. 1, 1980 Census	96,356
Apr. 1, 1990 Census	123,372
Apr. 1, 2000 Census	150,897
Dec. 31, 2004 Estimate*	167,546
Dec. 31, 2007 Estimate*	173,839

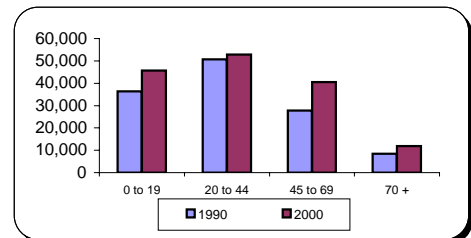
Source: MD and Carroll County Departments of Planning



## Population By Age Composition in Year 2000

<u>Age Group</u>	<u>1990</u>	<u>2000</u>
0 to 19	36,434	45,623
20 to 44	50,752	52,889
45 to 69	27,750	40,524
70 +	8,436	11,861
<b>Total</b>	<b>123,372</b>	<b>150,897</b>

Source: US Census Bureau and Carroll County Department of Planning

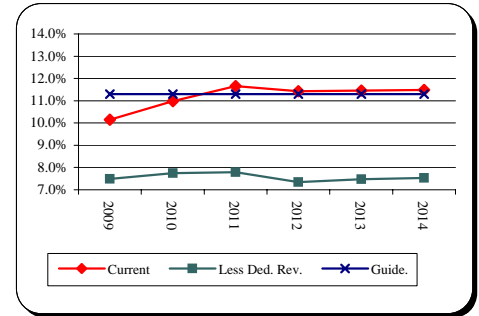


\* Indicates estimate

# Financial and Demographic Data

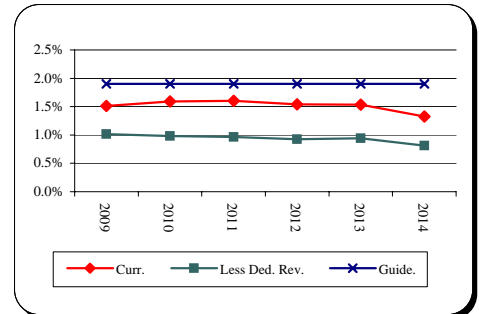
## General Fund Debt Service/General Fund Revenue

<u>Fiscal Year</u>	<u>Current Position</u>	<u>Less Dedicated Revenue and Supported DS</u>	<u>County Guideline</u>
2009	10.1%	7.5%	11.3%
2010	11.0%	7.7%	11.3%
2011	11.7%	7.8%	11.3%
2012	11.4%	7.3%	11.3%
2013	11.5%	7.5%	11.3%
2014	11.5%	7.5%	11.3%



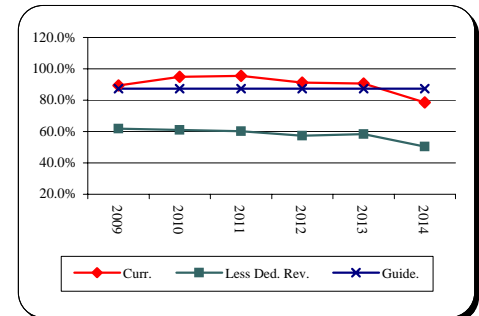
## General Fund Debt/Assessable Base

<u>Fiscal Year</u>	<u>Current Position</u>	<u>Less Dedicated Revenue and Supported Debt</u>	<u>County Guideline</u>
2009	1.5%	1.0%	1.9%
2010	1.6%	1.0%	1.9%
2011	1.6%	1.0%	1.9%
2012	1.5%	0.9%	1.9%
2013	1.5%	0.9%	1.9%
2014	1.3%	0.8%	1.9%



## General Fund Debt/General Fund Revenue

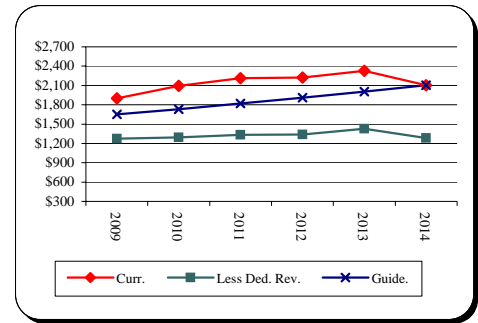
<u>Fiscal Year</u>	<u>Current Position</u>	<u>Less Dedicated Revenue and Supported Debt</u>	<u>County Guideline</u>
2009	89.3%	61.9%	87.4%
2010	94.9%	61.0%	87.4%
2011	95.5%	60.2%	87.4%
2012	91.2%	57.4%	87.4%
2013	90.7%	58.3%	87.4%
2014	78.6%	50.4%	87.4%



# Financial and Demographic Data

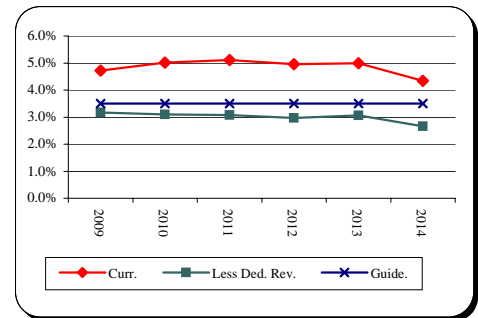
## General Fund Debt/Capita

<u>Fiscal Year</u>	<u>Current Position</u>	<u>Less Dedicated Revenue and Supported Debt</u>	<u>County Guideline</u>
2009	\$1,899	\$1,273	\$1,650
2010	2,094	1,294	1,733
2011	2,211	1,331	1,819
2012	2,225	1,336	1,910
2013	2,325	1,426	2,006
2014	2,103	1,286	2,106



## General Fund Debt/Personal Income

<u>Fiscal Year</u>	<u>Current Position</u>	<u>Less Dedicated Revenue and Supported Debt</u>	<u>County Guideline</u>
2009	4.7%	3.2%	3.5%
2010	5.0%	3.1%	3.5%
2011	5.1%	3.1%	3.5%
2012	5.0%	3.0%	3.5%
2013	5.0%	3.1%	3.5%
2014	4.3%	2.7%	3.5%



Source: Bureau of Economic Analysis

## Total Debt Service/General Fund Revenue

<u>Fiscal Year</u>	<u>Current Position</u>	<u>Less Dedicated Revenue and Supported DS</u>	<u>County Guideline</u>
2009	11.5%	7.8%	12.0%
2010	12.2%	8.1%	12.0%
2011	12.8%	8.1%	12.0%
2012	12.3%	7.6%	12.0%
2013	12.2%	7.7%	12.0%
2014	12.2%	7.8%	12.0%

