

Appropriation Summary by Fund

Funds	Actual FY 07	Original Budget FY 08	Adjusted Budget FY 08	Proposed Budget FY 09	% Change From Orig. FY 08	% Change From Adj. FY 08
General	\$295,375,742	\$328,372,000	\$328,861,624	\$353,000,000	7.50%	7.50%
Capital¹	110,627,037	187,127,907	187,127,907	134,018,106	-28.38%	-28.38%
Water and Sewer²	20,705,348	20,045,896	20,120,831	11,097,950	-44.64%	-44.84%
Solid Waste²	8,927,027	10,874,660	10,852,040	12,115,710	11.41%	11.64%
Airport²	8,458,346	11,291,222	11,354,032	11,056,160	-2.08%	-2.62%
Firearms²	58,235	40,000	40,000	75,100	87.75%	87.75%
Septage²	642,315	832,750	832,750	919,200	10.38%	10.38%
LOSAP	0	1,000,000	1,000,000	0	-100.00%	-100.00%
Special Revenue	3,062,900	10,985,500	10,985,500	1,312,350	-88.05%	-88.05%
Pension Trust	1,295,050	985,423	985,423	958,230	-2.76%	-2.76%
OPEB³	1,963,100	4,966,200	4,966,200	7,115,800	43.28%	43.28%
Grants⁴	10,879,087	11,798,727	11,798,727	13,287,458	12.62%	12.62%
Total Budget	\$461,994,187	\$588,320,285	\$588,925,034	\$544,956,064	-7.37%	-7.47%

¹The Capital Fund does not include capital projects for Enterprise funds, as they are included in their individual funds.

² Enterprise Funds - include both operating and capital budgets.

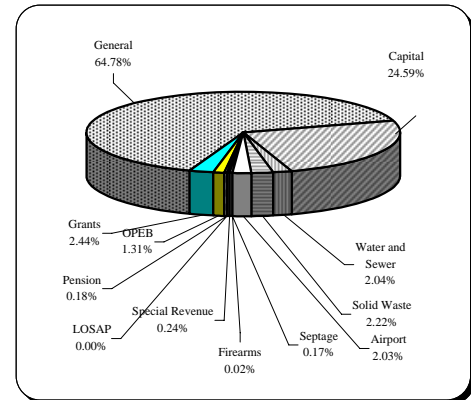
³ Other Post Employment Benefits.

⁴ All Grant dollars are shown as Original Budgets.

Financial and Demographic Data

FY 09 Budget By Fund

<u>Fund Type</u>	<u>FY 09</u>
General	\$353,000,000
Capital	134,018,106
Water and Sewer	11,097,950
Solid Waste	12,115,710
Airport	11,056,160
Firearms	75,100
Septage	919,200
Special Revenue	1,312,350
LOSAP	0
Pension	958,230
OPEB	7,115,800
Grants	13,287,458
Total	\$544,956,064



Income Tax Collected-Operating

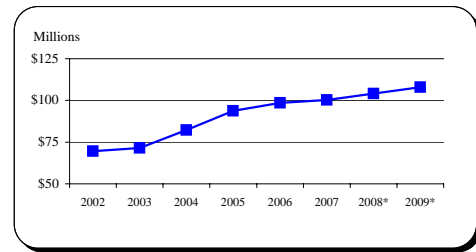
<u>Year</u>	<u>Taxes Collected</u>	<u>% Change</u>
2002	\$69,517,735	3.4%
2003	71,480,051	2.8%
2004	82,191,515	15.0%
2005	93,818,463	14.1%
2006	98,577,624	5.1%
2007	100,272,976	1.7%
2008*	104,000,000	3.7%
2009*	108,000,000	3.8%

Tax rate increased from 2.85% to 3.05% effective Jan 1, 2004.

Because income taxes are based on a calendar year and the County's budget is based on a July 1 through June 30 fiscal year, only 1/2 of the collections of FY 04 are affected.

9.09% of income tax revenue is directly appropriated to the CIP.

Source: FY 02-FY 07 Carroll County CAFR

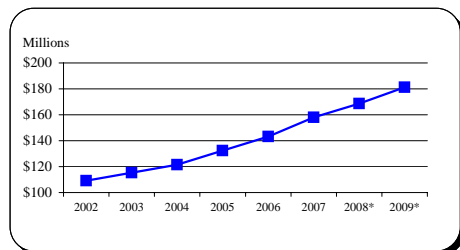


Total Local Property Tax Collected

<u>Year</u>	<u>Taxes Collected</u>	<u>% Change</u>
2002	\$109,026,120	9.0%
2003	115,417,116	5.9%
2004	121,407,052	5.2%
2005	132,226,766	8.9%
2006	143,192,552	8.3%
2007	158,112,936	10.4%
2008*	168,574,900	6.6%
2009*	181,232,306	7.5%

Tax rate is \$1.048 for Real Property and 2.62% for Personal Property

Source: FY 02-FY 07 Carroll County CAFR

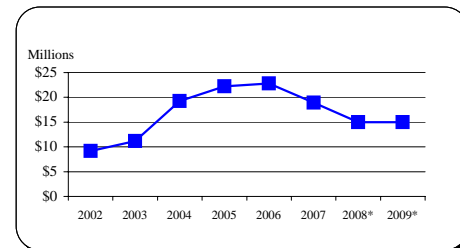


Recordation Tax Collected

<u>Year</u>	<u>Base</u>	<u>% Change</u>
2002	\$9,157,726	30.2%
2003	11,152,453	21.8%
2004	19,238,898	72.5%
2005	22,207,072	15.4%
2006	22,782,302	2.6%
2007	18,902,094	-17.0%
2008*	15,000,000	-20.6%
2009*	15,000,000	0.0%

Beginning in FY 04, tax rate increased from \$3.50 per \$500 to \$5.00 per \$500.

Source: FY 02-FY 07 Carroll County CAFR



* Indicates estimate

Financial and Demographic Data

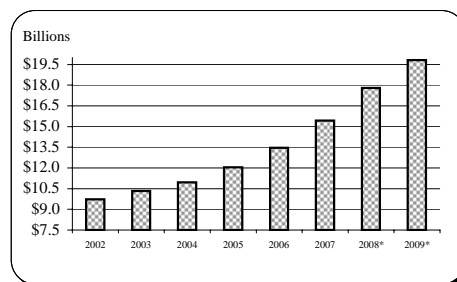
Assessable Base-Real and Personal Property

Year	Base	% Change
2002	\$9,726,556,899	6.0%
2003	10,340,867,012	6.3%
2004	10,948,754,959	5.9%
2005	12,034,458,190	9.9%
2006	13,470,143,079	11.9%
2007	15,441,306,101	14.6%
2008*	17,802,910,000	15.3%
2009*	19,822,202,000	11.3%

All years are expressed at 100% of assessed value.

Source: FY 02-FY 07 Carroll County CAFR

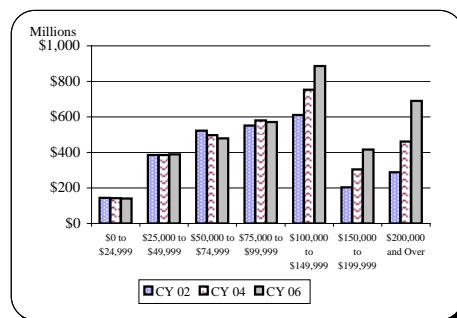
FY 08-09 Maryland State Department of Assessment and Taxation



Net Taxable Income

Income Range	CY 02	CY 04	CY 06
\$0 to \$24,999	\$143,812,972	\$142,600,510	\$139,676,130
\$25,000 to \$49,999	384,784,150	385,916,181	389,834,803
\$50,000 to \$74,999	522,478,280	497,747,551	479,697,529
\$75,000 to \$99,999	551,668,546	580,845,764	570,854,376
\$100,000 to \$149,999	610,887,788	752,517,723	886,725,207
\$150,000 to \$199,999	203,196,007	304,860,906	416,376,892
\$200,000 and Over	288,345,573	460,386,592	690,155,799

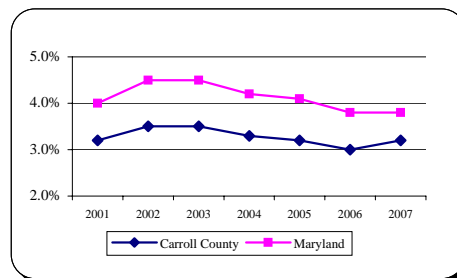
Source: 2006 Comptroller of Maryland Income Tax Summary Report



Average Annual Unemployment Rates

Year	Carroll County	Maryland
2001	3.2%	4.0%
2002	3.5%	4.5%
2003	3.5%	4.5%
2004	3.3%	4.2%
2005	3.2%	4.1%
2006	3.0%	3.8%
2007	3.2%	3.8%

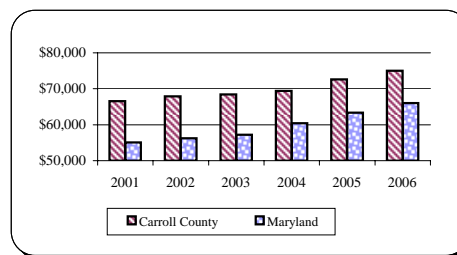
Source: MD Department of Labor, Licensing and Regulation



Median Household Income

Year	Carroll County	Maryland
2001	\$66,600	\$55,050
2002	67,850	56,200
2003	68,450	57,200
2004	69,450	60,450
2005	72,650	63,350
2006	75,050	66,060

Source: 2007 Carroll County Credit Rating



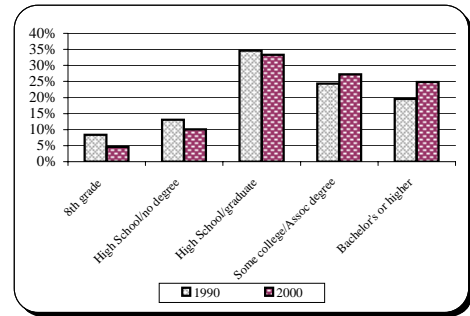
* Indicates estimate

Financial and Demographic Data

Education Attainment

<u>Level</u>	<u>1990</u>	<u>2000</u>
8th grade	8.4%	4.6%
High School/no degree	13.1%	10.1%
High School/graduate	34.6%	33.3%
Some college/Assoc degree	24.3%	27.2%
Bachelor's or higher	19.6%	24.8%

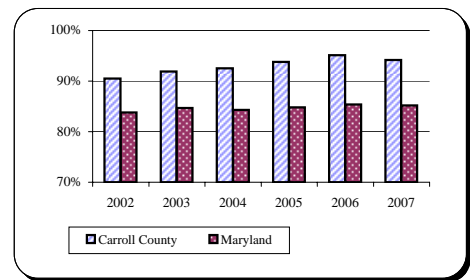
Source: US Census Bureau



Graduation Rates

<u>Year</u>	<u>Carroll County</u>	<u>Maryland</u>
2002	90.5%	83.8%
2003	91.9%	84.7%
2004	92.5%	84.3%
2005	93.8%	84.8%
2006	95.1%	85.4%
2007	94.2%	85.2%

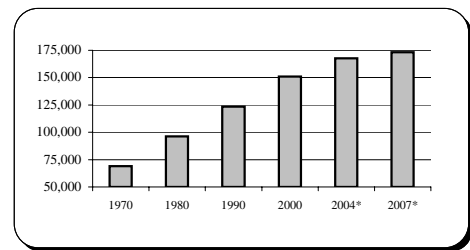
Source: MD Department of Education, 2007 MSDE Report Card



Population

<u>Year</u>	<u>Carroll County</u>
Apr. 1, 1970 Census	69,006
Apr. 1, 1980 Census	96,356
Apr. 1, 1990 Census	123,372
Apr. 1, 2000 Census	150,897
Dec. 31, 2004 Estimate*	167,546
Dec. 31, 2007 Estimate*	173,305

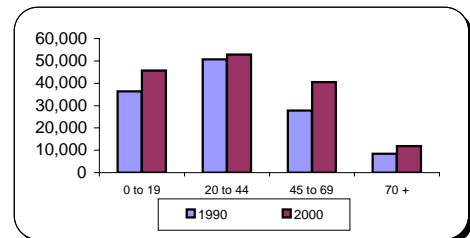
Source: MD and Carroll County Departments of Planning



Population By Age Composition in Year 2000

<u>Age Group</u>	<u>1990</u>	<u>2000</u>
0 to 19	36,434	45,623
20 to 44	50,752	52,889
45 to 69	27,750	40,524
70 +	8,436	11,861
Total	123,372	150,897

Source: US Census Bureau and Carroll County Department of Planning

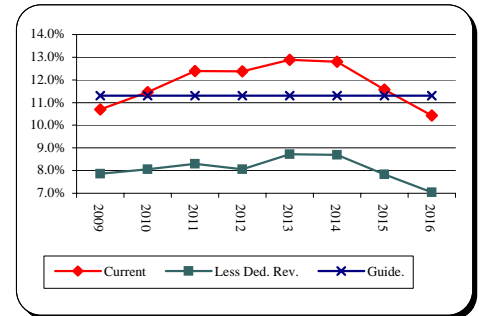


* Indicates estimate

Financial and Demographic Data

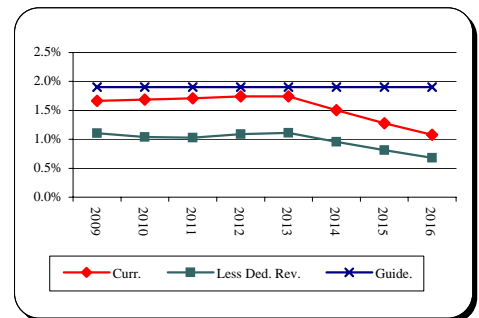
General Fund Debt Service/General Fund Revenue

<u>Fiscal Year</u>	<u>Current Position</u>	<u>Less Dedicated Revenue and Supported DS</u>	<u>County Guideline</u>
2009	10.7%	7.9%	11.3%
2010	11.5%	8.1%	11.3%
2011	12.4%	8.3%	11.3%
2012	12.4%	8.1%	11.3%
2013	12.9%	8.7%	11.3%
2014	12.8%	8.7%	11.3%
2015	11.6%	7.8%	11.3%
2016	10.4%	7.0%	11.3%



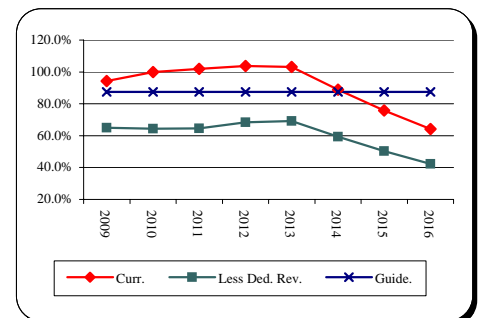
General Fund Debt/Assessable Base

<u>Fiscal Year</u>	<u>Current Position</u>	<u>Less Dedicated Revenue and Supported Debt</u>	<u>County Guideline</u>
2009	1.7%	1.1%	1.9%
2010	1.7%	1.0%	1.9%
2011	1.7%	1.0%	1.9%
2012	1.7%	1.1%	1.9%
2013	1.7%	1.1%	1.9%
2014	1.5%	1.0%	1.9%
2015	1.3%	0.8%	1.9%
2016	1.1%	0.7%	1.9%



General Fund Debt/General Fund Revenue

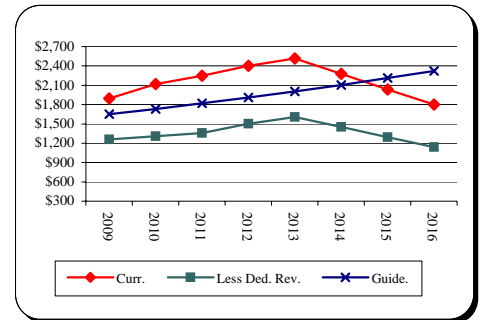
<u>Fiscal Year</u>	<u>Current Position</u>	<u>Less Dedicated Revenue and Supported Debt</u>	<u>County Guideline</u>
2009	94.4%	65.0%	87.4%
2010	99.9%	64.3%	87.4%
2011	101.8%	64.6%	87.4%
2012	103.8%	68.4%	87.4%
2013	103.0%	69.1%	87.4%
2014	88.9%	59.4%	87.4%
2015	75.9%	50.4%	87.4%
2016	64.1%	42.2%	87.4%



Financial and Demographic Data

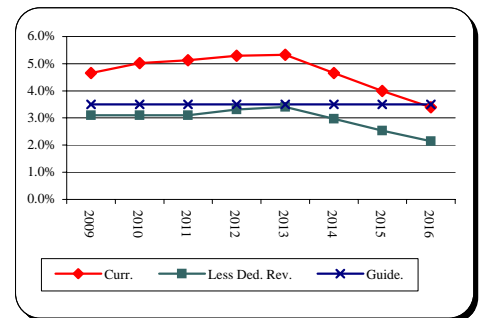
General Fund Debt/Capita

<u>Fiscal Year</u>	<u>Current Position</u>	<u>Less Dedicated Revenue and Supported Debt</u>	<u>County Guideline</u>
2009	\$1,895	\$1,261	\$1,650
2010	2,118	1,308	1,733
2011	2,246	1,356	1,819
2012	2,404	1,504	1,910
2013	2,515	1,605	2,006
2014	2,279	1,452	2,106
2015	2,036	1,293	2,211
2016	1,801	1,141	2,322



General Fund Debt/Personal Income

<u>Fiscal Year</u>	<u>Current Position</u>	<u>Less Dedicated Revenue and Supported Debt</u>	<u>County Guideline</u>
2009	4.7%	3.1%	3.5%
2010	5.0%	3.1%	3.5%
2011	5.1%	3.1%	3.5%
2012	5.3%	3.3%	3.5%
2013	5.3%	3.4%	3.5%
2014	4.7%	3.0%	3.5%
2015	4.0%	2.5%	3.5%
2016	3.4%	2.1%	3.5%



Source: Bureau of Economic Analysis

Total Debt Service/General Fund Revenue

<u>Fiscal Year</u>	<u>Current Position</u>	<u>Less Dedicated Revenue and Supported DS</u>	<u>County Guideline</u>
2009	12.1%	8.2%	12.0%
2010	12.8%	8.4%	12.0%
2011	13.6%	8.6%	12.0%
2012	13.3%	8.3%	12.0%
2013	13.7%	9.0%	12.0%
2014	13.6%	8.9%	12.0%
2015	12.3%	8.1%	12.0%
2016	11.1%	7.2%	12.0%

