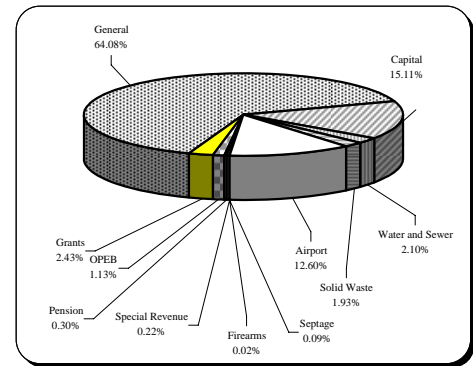


# Financial and Demographic Data

## FY 10 Budget By Fund

<u>Fund Type</u>	<u>FY 10</u>
General	\$354,500,000
Capital	83,584,159
Water and Sewer	11,617,870
Solid Waste	10,697,400
Airport	69,690,142
Firearms	81,915
Septage	496,450
Special Revenue	1,226,050
Pension	1,643,000
OPEB	6,225,000
Grants	13,420,906
<b>Total</b>	<b>\$553,182,892</b>



## Income Tax Collected-Operating

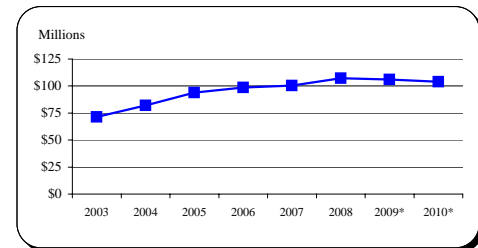
<u>Year</u>	<u>Taxes Collected</u>	<u>% Change</u>
2003	71,480,051	2.8%
2004	82,191,515	15.0%
2005	93,818,463	14.1%
2006	98,577,624	5.1%
2007	100,272,976	1.7%
2008	107,251,813	7.0%
2009*	106,000,000	-1.2%
2010*	104,000,000	-1.9%

Tax rate increased from 2.85% to 3.05% effective Jan 1, 2004.

Because income taxes are based on a calendar year and the County's budget is based on a July 1 through June 30 fiscal year, only 1/2 of the collections of FY 04 are affected.

9.09% of income tax revenue is directly appropriated to the CIP.

Source: FY 03-FY 08 Carroll County CAFR, Schedule 1-1

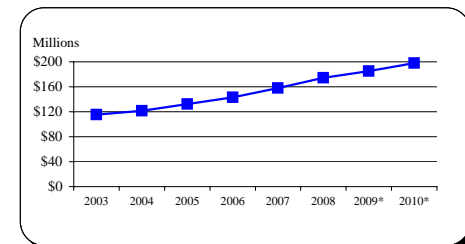


## Total Local Property Tax Collected

<u>Year</u>	<u>Taxes Collected</u>	<u>% Change</u>
2003	115,417,116	5.9%
2004	121,407,052	5.2%
2005	132,226,766	8.9%
2006	143,192,552	8.3%
2007	158,112,936	10.4%
2008	174,354,873	10.3%
2009*	185,139,900	6.2%
2010*	198,082,300	7.0%

Tax rate is \$1.048 for Real Property and 2.62% for Personal Property

Source: FY 03-FY 08 Carroll County CAFR

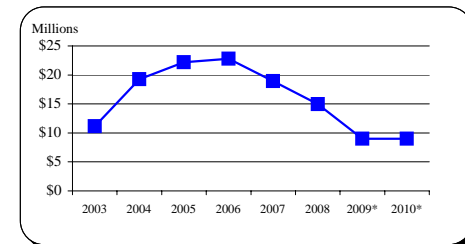


## Recordation Tax Collected

<u>Year</u>	<u>Base</u>	<u>% Change</u>
2003	11,152,453	21.8%
2004	19,238,898	72.5%
2005	22,207,072	15.4%
2006	22,782,302	2.6%
2007	18,902,094	-17.0%
2008	14,948,705	-20.9%
2009*	9,000,000	-39.8%
2010*	9,000,000	0.0%

Beginning in FY 04, tax rate increased from \$3.50 per \$500 to \$5.00 per \$500.

Source: FY 03-FY 08 Carroll County CAFR



\* Indicates estimate or projection

# Financial and Demographic Data

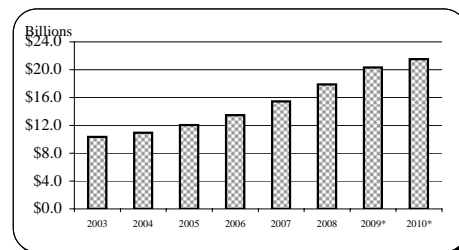
## Assessable Base-Real and Personal Property

Year	Base	% Change
2003	10,340,867,012	6.3%
2004	10,948,754,959	5.9%
2005	12,034,458,190	9.9%
2006	13,470,143,079	11.9%
2007	15,441,306,101	14.6%
2008	17,902,568,898	15.9%
2009*	20,328,488,000	13.6%
2010*	21,507,379,000	5.8%

All years are expressed at 100% of assessed value.

Sources: FY 03-FY 08 Carroll County CAFR

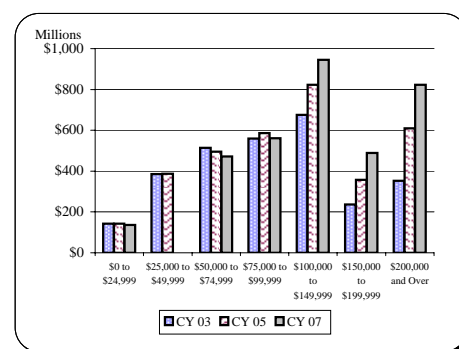
FY 09-10 Maryland State Department of Assessment and Taxation



## Net Taxable Income

Income Range	CY 03	CY 05	CY 07
\$0 to \$24,999	\$142,159,233	\$142,573,289	\$136,735,643
\$25,000 to \$49,999	384,806,549	386,552,032	391,736,015
\$50,000 to \$74,999	514,436,951	495,409,986	471,454,229
\$75,000 to \$99,999	559,543,532	585,949,662	561,164,425
\$100,000 to \$149,999	676,304,620	822,607,976	945,635,927
\$150,000 to \$199,999	237,090,393	357,072,018	488,405,554
\$200,000 and Over	353,433,550	610,145,777	823,527,349

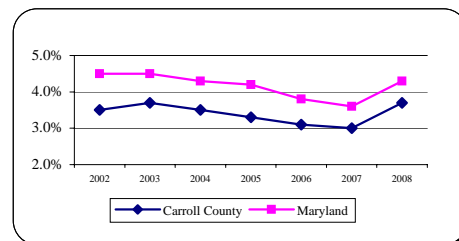
Sources: 2003, 2005, & 2007 Comptroller of Maryland Income Tax Summary Reports



## Average Annual Unemployment Rates

Year	Carroll County	Maryland
2002	3.5%	4.5%
2003	3.7%	4.5%
2004	3.5%	4.3%
2005	3.3%	4.2%
2006	3.1%	3.8%
2007	3.0%	3.6%
2008	3.7%	4.3%

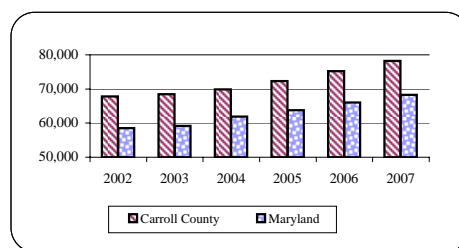
Source: MD Department of Labor, Licensing and Regulation



## Median Household Income

Year	Carroll County	Maryland
2002	67,850	58,550
2003	68,450	59,200
2004	69,900	61,900
2005	72,350	63,800
2006	75,250	66,050
2007	78,200	68,300

Source: 2008 Carroll County Credit Rating



\* Indicates estimate or projection

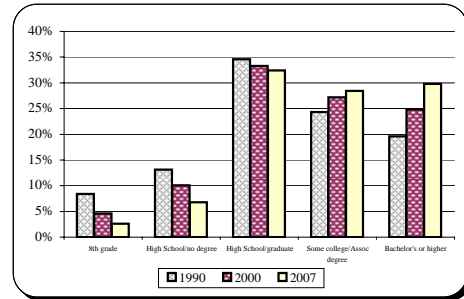
# Financial and Demographic Data

## Educational Attainment

<u>Population 25+ years</u>	<u>1990</u>	<u>2000</u>	<u>2007</u>
8th grade	8.4%	4.6%	2.6%
High School/no degree	13.1%	10.1%	6.8%
High School/graduate	34.6%	33.3%	32.4%
Some college/Assoc degree	24.3%	27.2%	28.4%
Bachelor's or higher	19.6%	24.8%	29.8%

Sources: US Census Bureau - 1990 & 2000 Census

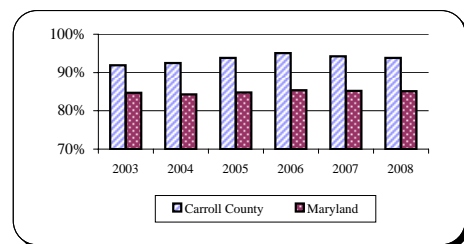
US Census Bureau - 2007 American Community Survey



## Graduation Rates

<u>Year</u>	<u>Carroll County</u>	<u>Maryland</u>
2003	91.9%	84.7%
2004	92.5%	84.3%
2005	93.8%	84.8%
2006	95.1%	85.4%
2007	94.2%	85.2%
2008	93.8%	85.1%

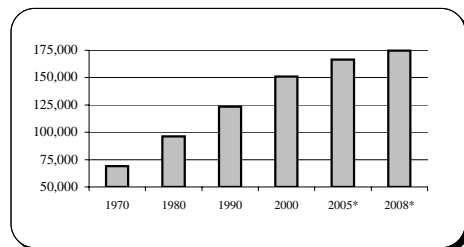
Source: MD Department of Education, 2008 MSDE Report Card



## Population

<u>Year</u>	<u>Carroll County</u>
Apr. 1, 1970 Census	69,006
Apr. 1, 1980 Census	96,356
Apr. 1, 1990 Census	123,372
Apr. 1, 2000 Census	150,897
2005 Estimate*	166,500
Dec. 2008 Estimate*	174,650

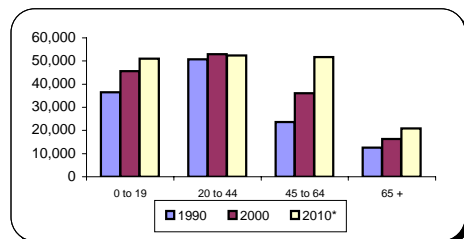
Sources: MD and Carroll County Departments of Planning



## Population By Age Composition in Year 2000

<u>Age Group</u>	<u>1990</u>	<u>2000</u>	<u>2010*</u>
0 to 19	36,434	45,623	50,990
20 to 44	50,752	52,889	52,330
45 to 64	23,653	36,118	51,720
65 +	12,533	16,267	20,860
<b>Total</b>	<b>123,372</b>	<b>150,897</b>	<b>175,900</b>

Source: MD Department of Planning, Planning Data Services as of Feb. 2009

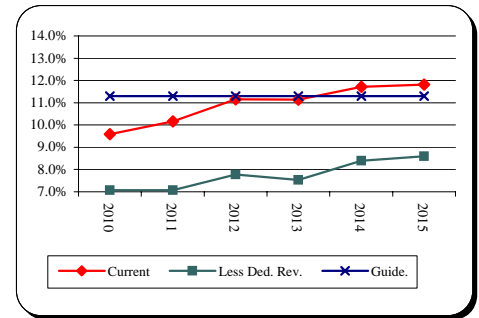


\* Indicates estimate or projection

# Financial and Demographic Data

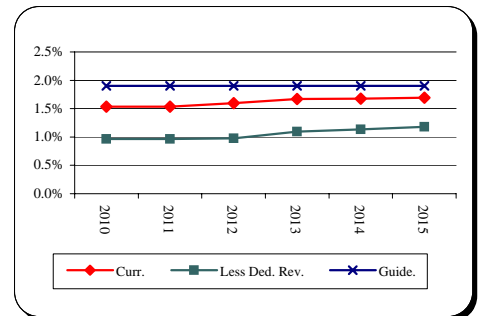
## General Fund Debt Service/General Fund Revenue

<u>Fiscal Year</u>	<u>Current Position</u>	<u>Less Dedicated Revenue and Supported DS</u>	<u>County Guideline</u>
2010	9.6%	7.1%	11.3%
2011	10.2%	7.1%	11.3%
2012	11.2%	7.8%	11.3%
2013	11.1%	7.5%	11.3%
2014	11.7%	8.4%	11.3%
2015	11.8%	8.6%	11.3%



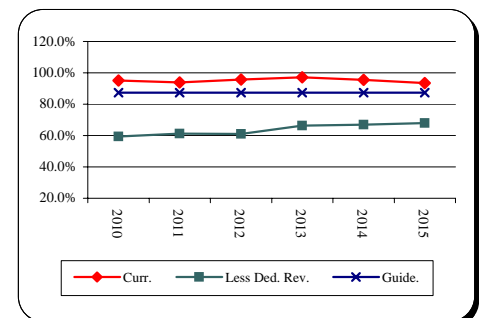
## General Fund Debt/Assessable Base

<u>Fiscal Year</u>	<u>Current Position</u>	<u>Less Dedicated Revenue and Supported Debt</u>	<u>County Guideline</u>
2010	1.5%	1.0%	1.9%
2011	1.5%	1.0%	1.9%
2012	1.6%	1.0%	1.9%
2013	1.7%	1.1%	1.9%
2014	1.7%	1.1%	1.9%
2015	1.7%	1.2%	1.9%



## General Fund Debt/General Fund Revenue

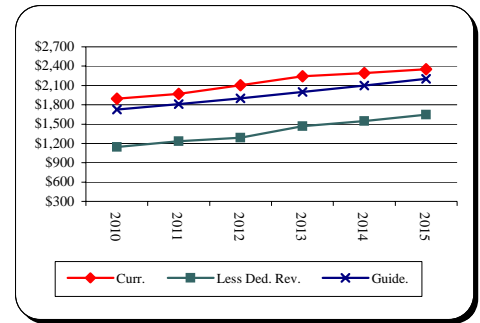
<u>Fiscal Year</u>	<u>Current Position</u>	<u>Less Dedicated Revenue and Supported Debt</u>	<u>County Guideline</u>
2010	95.1%	59.4%	87.4%
2011	93.9%	61.2%	87.4%
2012	95.6%	61.0%	87.4%
2013	97.1%	66.3%	87.4%
2014	95.5%	67.0%	87.4%
2015	93.6%	68.0%	87.4%



# Financial and Demographic Data

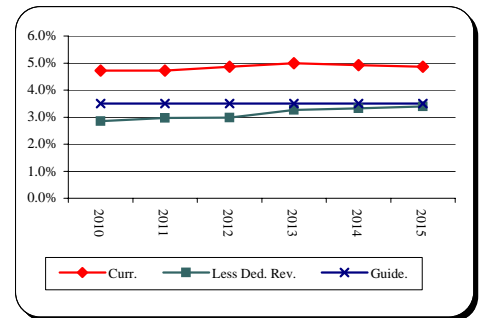
## General Fund Debt/Capita

<u>Fiscal Year</u>	<u>Current Position</u>	<u>Less Dedicated Revenue and Supported Debt</u>	<u>County Guideline</u>
2010	\$1,894	\$1,146	\$1,725
2011	1,968	1,237	1,811
2012	2,105	1,290	1,902
2013	2,243	1,467	1,997
2014	2,294	1,547	2,097
2015	2,352	1,645	2,202



## General Fund Debt/Personal Income

<u>Fiscal Year</u>	<u>Current Position</u>	<u>Less Dedicated Revenue and Supported Debt</u>	<u>County Guideline</u>
2010	4.7%	2.9%	3.5%
2011	4.7%	3.0%	3.5%
2012	4.9%	3.0%	3.5%
2013	5.0%	3.3%	3.5%
2014	4.9%	3.3%	3.5%
2015	4.9%	3.4%	3.5%



Source: Bureau of Economic Analysis

## Total Debt Service/General Fund Revenue

<u>Fiscal Year</u>	<u>Current Position</u>	<u>Less Dedicated Revenue and Supported DS</u>	<u>County Guideline</u>
2010	10.9%	7.4%	12.0%
2011	11.4%	7.4%	12.0%
2012	12.4%	8.1%	12.0%
2013	12.0%	7.8%	12.0%
2014	12.6%	8.7%	12.0%
2015	12.6%	8.8%	12.0%

