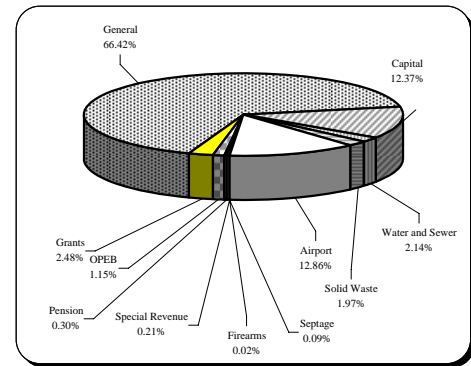


Financial and Demographic Data

FY 10 Budget By Fund

<u>Fund Type</u>	<u>FY 10</u>
General	\$360,000,000
Capital	67,022,460
Water and Sewer	11,617,870
Solid Waste	10,697,400
Airport	69,690,142
Firearms	81,915
Septage	496,450
Special Revenue	1,126,050
Pension	1,643,000
OPEB	6,225,000
Grants	13,420,906
Total	\$542,021,193



Income Tax Collected-Operating

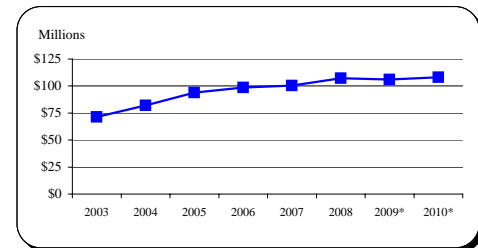
<u>Year</u>	<u>Taxes Collected</u>	<u>% Change</u>
2003	71,480,051	2.8%
2004	82,191,515	15.0%
2005	93,818,463	14.1%
2006	98,577,624	5.1%
2007	100,272,976	1.7%
2008	107,251,813	7.0%
2009*	106,000,000	-1.2%
2010*	108,000,000	1.9%

Tax rate increased from 2.85% to 3.05% effective Jan 1, 2004.

Because income taxes are based on a calendar year and the County's budget is based on a July 1 through June 30 fiscal year, only 1/2 of the collections of FY 04 are affected.

9.09% of income tax revenue is directly appropriated to the CIP.

Source: FY 03-FY 08 Carroll County CAFR, Schedule 1-1

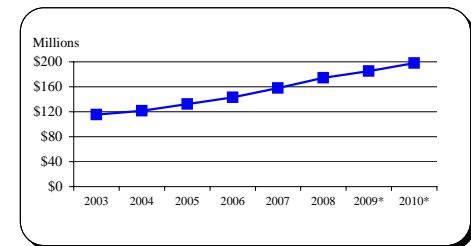


Total Local Property Tax Collected

<u>Year</u>	<u>Taxes Collected</u>	<u>% Change</u>
2003	115,417,116	5.9%
2004	121,407,052	5.2%
2005	132,226,766	8.9%
2006	143,192,552	8.3%
2007	158,112,936	10.4%
2008	174,354,873	10.3%
2009*	185,139,900	6.2%
2010*	198,082,300	7.0%

Tax rate is \$1.048 for Real Property and 2.62% for Personal Property

Source: FY 03-FY 08 Carroll County CAFR

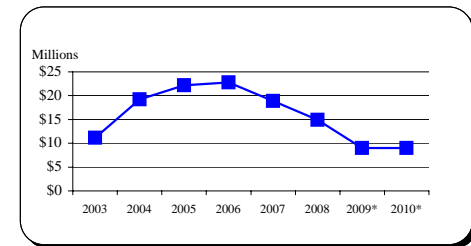


Recordation Tax Collected

<u>Year</u>	<u>Base</u>	<u>% Change</u>
2003	11,152,453	21.8%
2004	19,238,898	72.5%
2005	22,207,072	15.4%
2006	22,782,302	2.6%
2007	18,902,094	-17.0%
2008	14,948,705	-20.9%
2009*	9,000,000	-39.8%
2010*	9,000,000	0.0%

Beginning in FY 04, tax rate increased from \$3.50 per \$500 to \$5.00 per \$500.

Source: FY 03-FY 08 Carroll County CAFR



* Indicates estimate or projection

Financial and Demographic Data

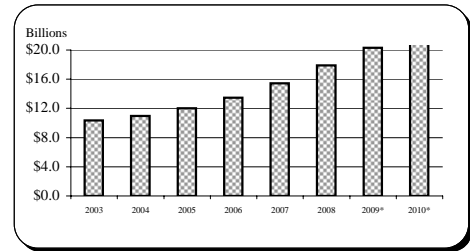
Assessable Base-Real and Personal Property

Year	Base	% Change
2003	10,340,867,012	6.3%
2004	10,948,754,959	5.9%
2005	12,034,458,190	9.9%
2006	13,470,143,079	11.9%
2007	15,441,306,101	14.6%
2008	17,902,568,898	15.9%
2009*	20,328,488,000	13.6%
2010*	21,507,379,000	5.8%

All years are expressed at 100% of assessed value.

Sources: FY 03-FY 08 Carroll County CAFR

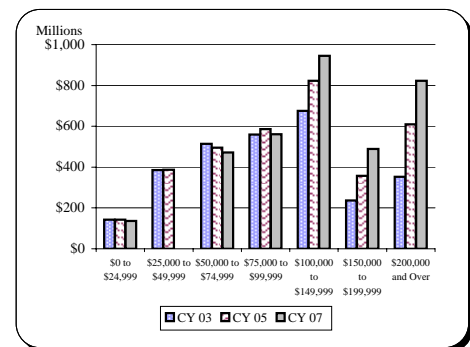
FY 09-10 Maryland State Department of Assessment and Taxation



Net Taxable Income

Income Range	CY 03	CY 05	CY 07
\$0 to \$24,999	\$142,159,233	\$142,573,289	\$136,735,643
\$25,000 to \$49,999	384,806,549	386,552,032	391,736,015
\$50,000 to \$74,999	514,436,951	495,409,986	471,454,229
\$75,000 to \$99,999	559,543,532	585,949,662	561,164,425
\$100,000 to \$149,999	676,304,620	822,607,976	945,635,927
\$150,000 to \$199,999	237,090,393	357,072,018	488,405,554
\$200,000 and Over	353,433,550	610,145,777	823,527,349

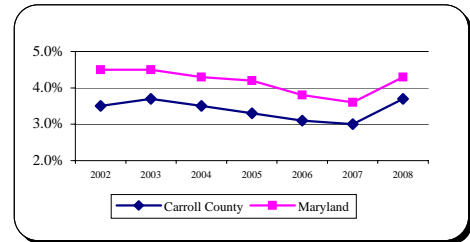
Sources: 2003, 2005, & 2007 Comptroller of Maryland Income Tax Summary Reports



Average Annual Unemployment Rates

Year	Carroll County	Maryland
2002	3.5%	4.5%
2003	3.7%	4.5%
2004	3.5%	4.3%
2005	3.3%	4.2%
2006	3.1%	3.8%
2007	3.0%	3.6%
2008	3.7%	4.3%

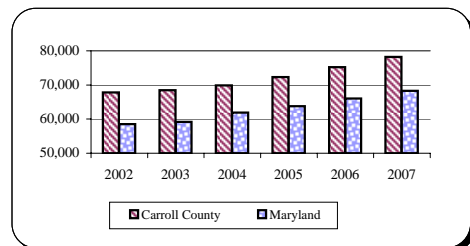
Source: MD Department of Labor, Licensing and Regulation



Median Household Income

Year	Carroll County	Maryland
2002	67,850	58,550
2003	68,450	59,200
2004	69,900	61,900
2005	72,350	63,800
2006	75,250	66,050
2007	78,200	68,300

Source: 2008 Carroll County Credit Rating



* Indicates estimate or projection

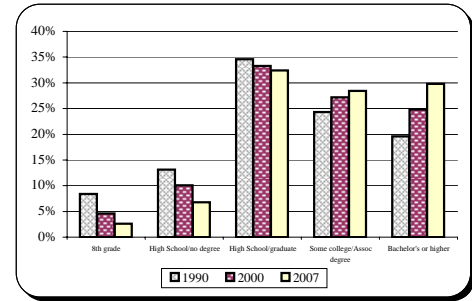
Financial and Demographic Data

Educational Attainment

<u>Population 25+ years</u>	<u>1990</u>	<u>2000</u>	<u>2007</u>
8th grade	8.4%	4.6%	2.6%
High School/no degree	13.1%	10.1%	6.8%
High School/graduate	34.6%	33.3%	32.4%
Some college/Assoc degree	24.3%	27.2%	28.4%
Bachelor's or higher	19.6%	24.8%	29.8%

Sources: US Census Bureau - 1990 & 2000 Census

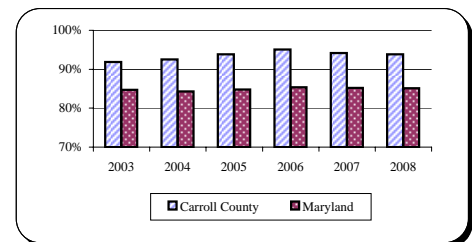
US Census Bureau - 2007 American Community Survey



Graduation Rates

<u>Year</u>	<u>Carroll County</u>	<u>Maryland</u>
2003	91.9%	84.7%
2004	92.5%	84.3%
2005	93.8%	84.8%
2006	95.1%	85.4%
2007	94.2%	85.2%
2008	93.8%	85.1%

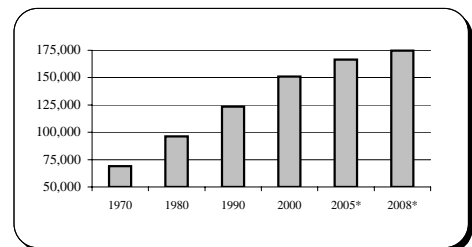
Source: MD Department of Education, 2008 MSDE Report Card



Population

<u>Year</u>	<u>Carroll County</u>
Apr. 1, 1970 Census	69,006
Apr. 1, 1980 Census	96,356
Apr. 1, 1990 Census	123,372
Apr. 1, 2000 Census	150,897
2005 Estimate*	166,500
Dec. 2008 Estimate*	174,650

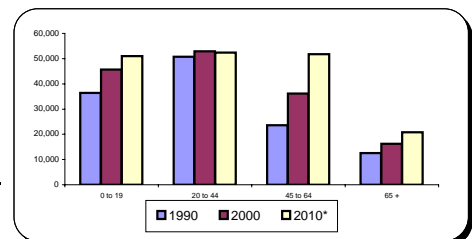
Sources: MD and Carroll County Departments of Planning



Population By Age Composition in Year 2000

<u>Age Group</u>	<u>1990</u>	<u>2000</u>	<u>2010*</u>
0 to 19	36,434	45,623	50,990
20 to 44	50,752	52,889	52,330
45 to 64	23,653	36,118	51,720
65 +	12,533	16,267	20,860
Total	123,372	150,897	175,900

Source: MD Department of Planning, Planning Data Services as of Feb. 2009

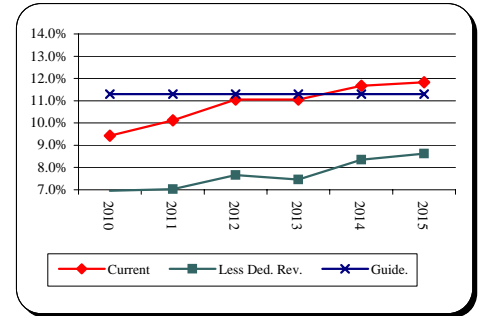


* Indicates estimate or projection

Financial and Demographic Data

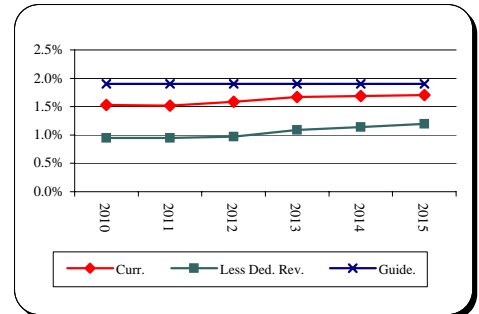
General Fund Debt Service/General Fund Revenue

<u>Fiscal Year</u>	<u>Current Position</u>	<u>Less Dedicated Revenue and Supported DS</u>	<u>County Guideline</u>
2010	9.4%	7.0%	11.3%
2011	10.1%	7.0%	11.3%
2012	11.1%	7.7%	11.3%
2013	11.1%	7.5%	11.3%
2014	11.7%	8.4%	11.3%
2015	11.8%	8.6%	11.3%



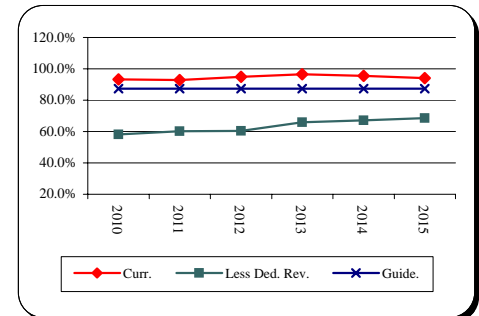
General Fund Debt/Assessable Base

<u>Fiscal Year</u>	<u>Current Position</u>	<u>Less Dedicated Revenue and Supported Debt</u>	<u>County Guideline</u>
2010	1.5%	0.9%	1.9%
2011	1.5%	0.9%	1.9%
2012	1.6%	1.0%	1.9%
2013	1.7%	1.1%	1.9%
2014	1.7%	1.1%	1.9%
2015	1.7%	1.2%	1.9%



General Fund Debt/General Fund Revenue

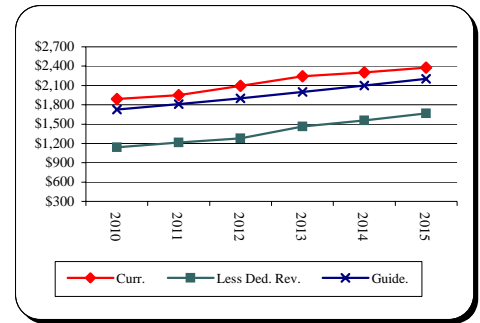
<u>Fiscal Year</u>	<u>Current Position</u>	<u>Less Dedicated Revenue and Supported Debt</u>	<u>County Guideline</u>
2010	93.3%	58.1%	87.4%
2011	92.9%	60.2%	87.4%
2012	94.9%	60.3%	87.4%
2013	96.6%	65.9%	87.4%
2014	95.5%	67.2%	87.4%
2015	94.1%	68.6%	87.4%



Financial and Demographic Data

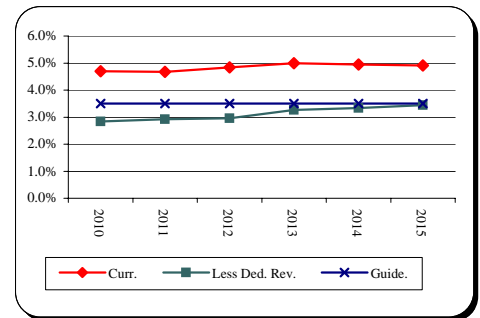
General Fund Debt/Capita

<u>Fiscal Year</u>	<u>Current Position</u>	<u>Less Dedicated Revenue and Supported Debt</u>	<u>County Guideline</u>
2010	\$1,888	\$1,140	\$1,725
2011	1,948	1,216	1,811
2012	2,093	1,278	1,902
2013	2,241	1,464	1,997
2014	2,305	1,557	2,097
2015	2,375	1,667	2,202



General Fund Debt/Personal Income

<u>Fiscal Year</u>	<u>Current Position</u>	<u>Less Dedicated Revenue and Supported Debt</u>	<u>County Guideline</u>
2010	4.7%	2.8%	3.5%
2011	4.7%	2.9%	3.5%
2012	4.8%	3.0%	3.5%
2013	5.0%	3.3%	3.5%
2014	4.9%	3.3%	3.5%
2015	4.9%	3.4%	3.5%



Source: Bureau of Economic Analysis

Total Debt Service/General Fund Revenue

<u>Fiscal Year</u>	<u>Current Position</u>	<u>Less Dedicated Revenue and Supported DS</u>	<u>County Guideline</u>
2010	10.7%	7.3%	12.0%
2011	11.3%	7.4%	12.0%
2012	12.3%	8.0%	12.0%
2013	11.9%	7.7%	12.0%
2014	12.5%	8.6%	12.0%
2015	12.6%	8.9%	12.0%

