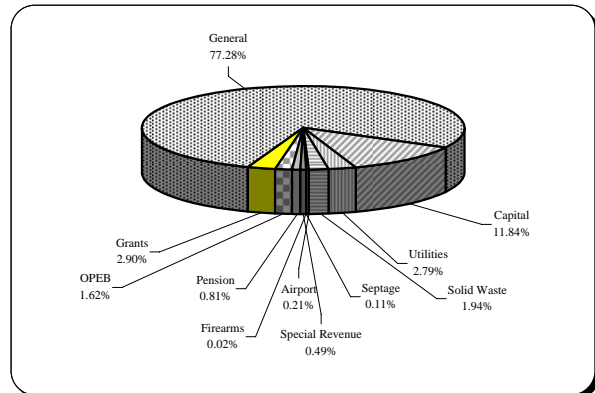


# Financial and Demographic Data

## FY 11 Budget By Fund

<u>Fund Type</u>	<u>FY 11</u>
General	\$349,000,000
Capital	\$53,457,339
Utilities	\$12,577,159
Solid Waste	\$8,742,220
Airport	\$944,620
Firearms	\$83,000
Septage	\$518,075
Special Revenue	\$2,213,000
Pension	\$3,655,000
OPEB	\$7,298,000
Grants	\$13,112,847
<b>Total</b>	<b>\$451,601,260</b>



## Income Tax Collected-Operating

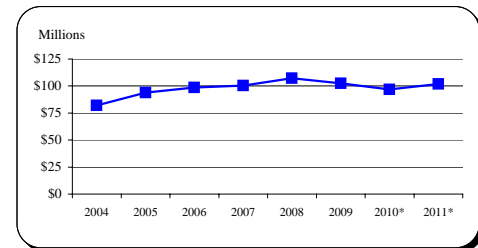
<u>Year</u>	<u>Taxes Collected</u>	<u>% Change</u>
2004	\$82,191,515	15.0%
2005	93,818,463	14.1%
2006	98,577,624	5.1%
2007	100,272,976	1.7%
2008	107,251,813	7.0%
2009	102,511,911	-4.4%
2010*	97,000,000	-5.4%
2011*	102,000,000	5.2%

Tax rate increased from 2.85% to 3.05% effective Jan 1, 2004.

Because income taxes are based on a calendar year and the County's budget is based on a July 1 through June 30 fiscal year, only 1/2 of the collections of FY 04 are affected.

9.09% of income tax revenue is directly appropriated to the CIP.

Source: FY 04-FY 09 Carroll County CAFR, Schedule 1-1

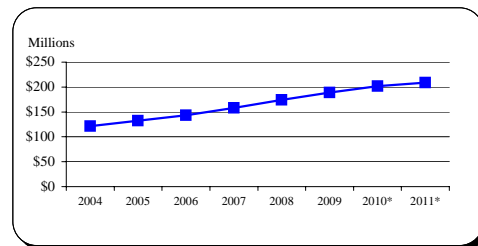


## Total Local Property Tax Collected

<u>Year</u>	<u>Taxes Collected</u>	<u>% Change</u>
2004	\$121,407,052	5.2%
2005	132,226,766	8.9%
2006	143,192,552	8.3%
2007	158,112,936	10.4%
2008	174,354,873	10.3%
2009	189,079,529	8.4%
2010*	202,000,000	6.8%
2011*	209,000,000	3.5%

Tax rate is \$1.048 for Real Property and \$2.62 for Personal Property

Source: FY 04-FY 09 Carroll County CAFR

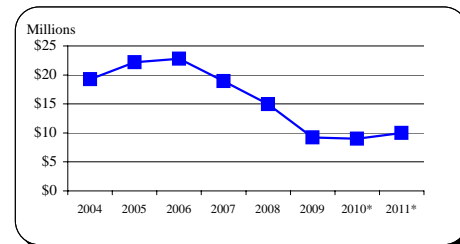


## Recordation Tax Collected

<u>Year</u>	<u>Base</u>	<u>% Change</u>
2004	\$19,238,898	72.5%
2005	22,207,072	15.4%
2006	22,782,302	2.6%
2007	18,902,094	-17.0%
2008	14,948,705	-20.9%
2009	9,220,249	-38.3%
2010*	9,000,000	-2.4%
2011*	10,000,000	11.1%

Beginning in FY 04, tax rate increased from \$3.50 per \$500 to \$5.00 per \$500.

Source: FY 04-FY 09 Carroll County CAFR



\* Indicates estimate or projection

# Financial and Demographic Data

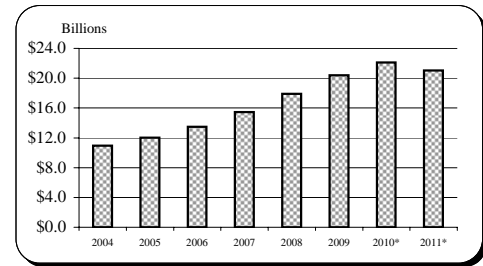
## Assessable Base-Real and Personal Property

Year	Base	% Change
2004	\$10,948,754,959	5.9%
2005	12,034,458,190	9.9%
2006	13,470,143,079	11.9%
2007	15,441,306,101	14.6%
2008	17,902,568,898	15.9%
2009	20,409,412,280	14.0%
2010*	22,100,000,000	8.3%
2011*	21,045,000,000	-4.8%

All years are expressed at 100% of assessed value.

Sources: FY 04-FY 08 Carroll County CAFR

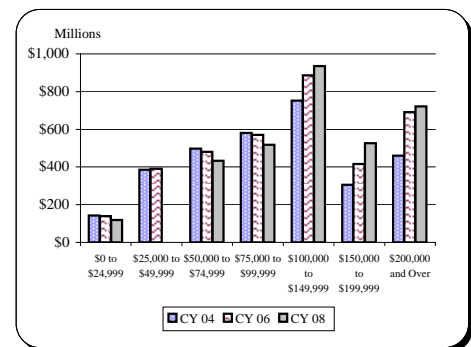
FY 10-11 Maryland State Department of Assessment and Taxation Dec. 2009 Update



## Net Taxable Income

Income Range	CY 04	CY 06	CY 08
\$0 to \$24,999	\$142,600,510	\$139,676,130	\$119,656,610
\$25,000 to \$49,999	385,916,181	389,834,803	365,318,235
\$50,000 to \$74,999	497,747,551	479,697,529	432,342,083
\$75,000 to \$99,999	580,845,764	570,854,376	517,179,884
\$100,000 to \$149,999	752,517,723	886,725,207	936,314,542
\$150,000 to \$199,999	304,860,906	416,376,892	525,939,891
\$200,000 and Over	460,386,592	690,155,799	722,060,186

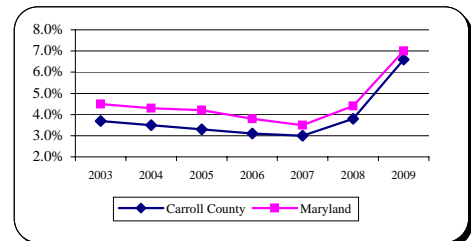
Sources: 2004, 2006, & 2008 Comptroller of Maryland Income Tax Summary Reports



## Average Annual Unemployment Rates

Year	Carroll County	Maryland
2003	3.7%	4.5%
2004	3.5%	4.3%
2005	3.3%	4.2%
2006	3.1%	3.8%
2007	3.0%	3.5%
2008	3.8%	4.4%
2009	6.6%	7.0%

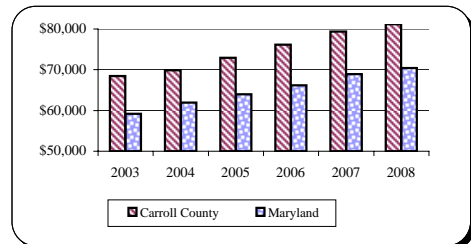
Source: MD Department of Labor, Licensing and Regulation



## Median Household Income

Year	Carroll County	Maryland
2003	\$68,450	59,200
2004	69,900	61,900
2005	72,900	64,000
2006	76,150	66,200
2007	79,400	68,950
2008	81,200	70,400

Source: MD Department of Planning, Planning Data Services, June 2009



\* Indicates estimate or projection

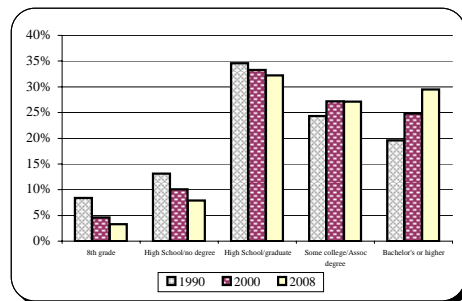
# Financial and Demographic Data

## Educational Attainment

<u>Population 25+ years</u>	<u>1990</u>	<u>2000</u>	<u>2008</u>
8th grade	8.4%	4.6%	3.3%
High School/no degree	13.1%	10.1%	7.9%
High School/graduate	34.6%	33.3%	32.2%
Some college/Assoc degree	24.3%	27.2%	27.1%
Bachelor's or higher	19.6%	24.8%	29.5%

Sources: US Census Bureau - 1990 & 2000 Census

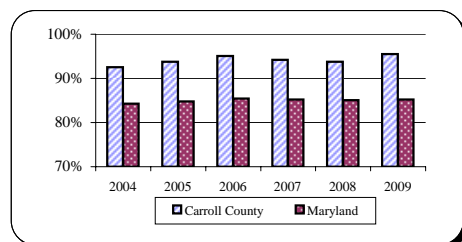
US Census Bureau - 2007 American Community Survey



## Graduation Rates

<u>Year</u>	<u>Carroll County</u>	<u>Maryland</u>
2004	92.5%	84.3%
2005	93.8%	84.8%
2006	95.1%	85.4%
2007	94.2%	85.2%
2008	93.8%	85.1%
2009	95.5%	85.2%

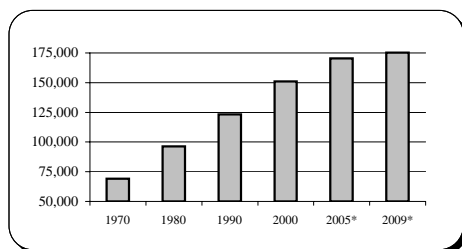
Source: 2009 Maryland Report Card



## Population

<u>Year</u>	<u>Carroll County</u>
April 1, 1970 Census	69,006
April 1, 1980 Census	96,356
April 1, 1990 Census	123,372
April 1, 2000 Census	150,897
2005 Estimate*	170,301
December 2009 Estimate*	175,305

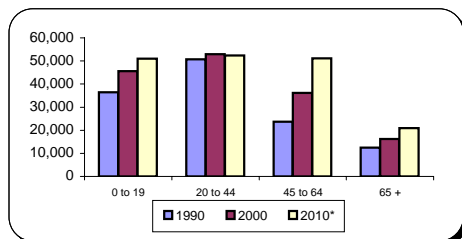
Sources: MD and Carroll County Departments of Planning



## Population By Age Composition in Year 2000

<u>Age Group</u>	<u>1990</u>	<u>2000</u>	<u>2010*</u>
0 to 19	36,434	45,623	51,000
20 to 44	50,752	52,889	52,330
45 to 64	23,653	36,118	51,115
65 +	12,533	16,267	20,860
<b>Total</b>	<b>123,372</b>	<b>150,897</b>	<b>175,305</b>

Source: MD Department of Planning, Planning Data Services as of Feb. 2009

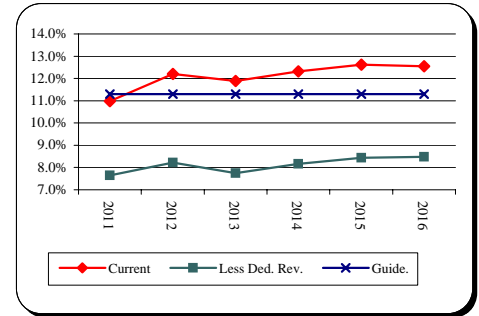


\* Indicates estimate or projection

# Financial and Demographic Data

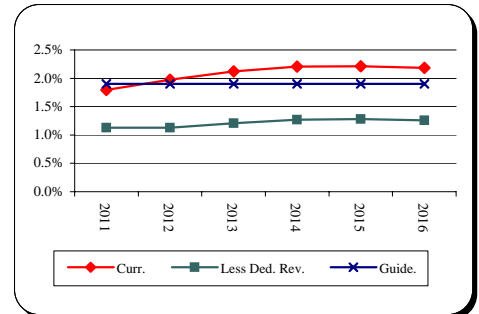
## General Fund Debt Service/General Fund Revenue

<u>Fiscal Year</u>	<u>Current Position</u>	<u>Less Dedicated Revenue and Supported DS</u>	<u>County Guideline</u>
2011	11.0%	7.6%	11.3%
2012	12.2%	8.2%	11.3%
2013	11.9%	7.8%	11.3%
2014	12.3%	8.2%	11.3%
2015	12.6%	8.4%	11.3%
2016	12.5%	8.5%	11.3%



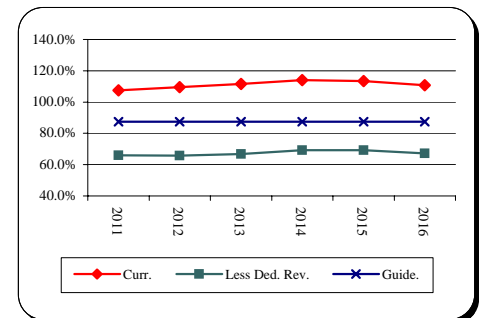
## General Fund Debt/Assessable Base

<u>Fiscal Year</u>	<u>Current Position</u>	<u>Less Dedicated Revenue and Supported Debt</u>	<u>County Guideline</u>
2011	1.8%	1.1%	1.9%
2012	2.0%	1.1%	1.9%
2013	2.1%	1.2%	1.9%
2014	2.2%	1.3%	1.9%
2015	2.2%	1.3%	1.9%
2016	2.2%	1.3%	1.9%



## General Fund Debt/General Fund Revenue

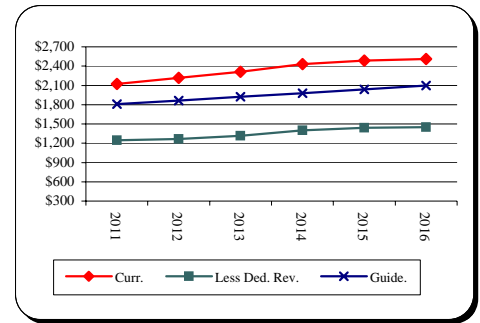
<u>Fiscal Year</u>	<u>Current Position</u>	<u>Less Dedicated Revenue and Supported Debt</u>	<u>County Guideline</u>
2011	107.6%	66.0%	87.4%
2012	109.5%	65.7%	87.4%
2013	111.5%	66.7%	87.4%
2014	114.1%	69.2%	87.4%
2015	113.4%	69.2%	87.4%
2016	110.7%	67.2%	87.4%



# Financial and Demographic Data

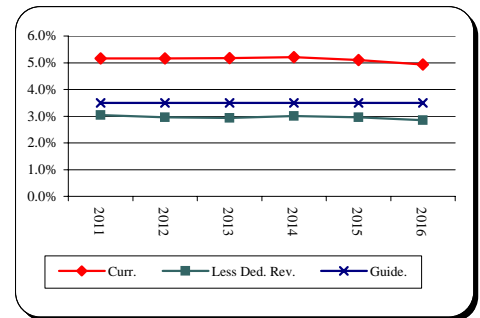
## General Fund Debt/Capita

<u>Fiscal Year</u>	<u>Current Position</u>	<u>Less Dedicated Revenue and Supported Debt</u>	<u>County Guideline</u>
2011	\$2,121	\$1,247	\$1,811
2012	2,215	1,266	1,865
2013	2,312	1,315	1,921
2014	2,430	1,401	1,979
2015	2,488	1,442	2,038
2016	2,510	1,451	2,099



## General Fund Debt/Personal Income

<u>Fiscal Year</u>	<u>Current Position</u>	<u>Less Dedicated Revenue and Supported Debt</u>	<u>County Guideline</u>
2011	5.2%	3.0%	3.5%
2012	5.2%	3.0%	3.5%
2013	5.2%	2.9%	3.5%
2014	5.2%	3.0%	3.5%
2015	5.1%	3.0%	3.5%
2016	4.9%	2.9%	3.5%



Source: Bureau of Economic Analysis

## Total Debt Service/General Fund Revenue

<u>Fiscal Year</u>	<u>Current Position</u>	<u>Less Dedicated Revenue and Supported DS</u>	<u>County Guideline</u>
2011	12.3%	7.6%	12.0%
2012	13.6%	8.2%	12.0%
2013	13.0%	7.8%	12.0%
2014	13.3%	8.2%	12.0%
2015	13.6%	8.4%	12.0%
2016	13.4%	8.5%	12.0%

