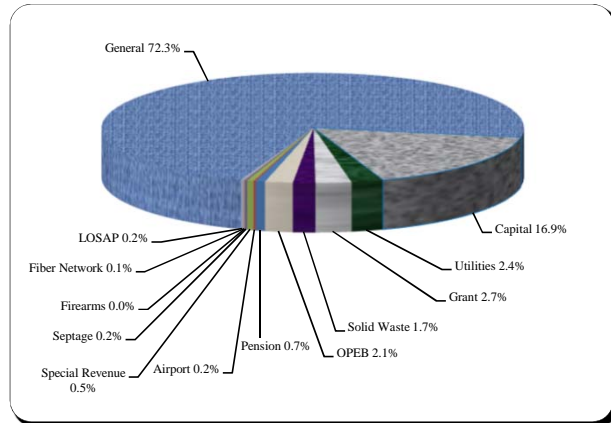


Financial and Demographic Data

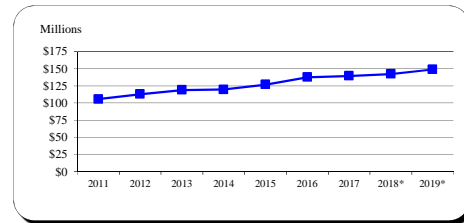
FY 19 Budget By Fund

Fund Type	FY 19	% of Total
General	\$411,258,050	72.3%
Capital	95,959,042	16.9%
Utilities	13,845,520	2.4%
Grant	15,489,742	2.7%
Solid Waste	9,636,070	1.7%
OPEB	12,005,300	2.1%
Pension	4,089,960	0.7%
Airport	994,350	0.2%
Special Revenue	2,784,230	0.5%
Septage	985,000	0.2%
Firearms	214,450	0.0%
Fiber Network	421,700	0.1%
LOSAP	1,282,000	0.2%
Total	\$568,965,414	100.0%



Income Tax Collected - Operating

Year	Taxes Collected	% Change
2011	\$105,610,792	-4.3%
2012	112,881,085	6.9%
2013	118,759,789	5.2%
2014	119,575,545	0.7%
2015	126,688,154	5.9%
2016	137,512,883	8.5%
2017	139,476,252	1.4%
2018*	142,200,000	2.0%
2019*	148,847,211	4.7%

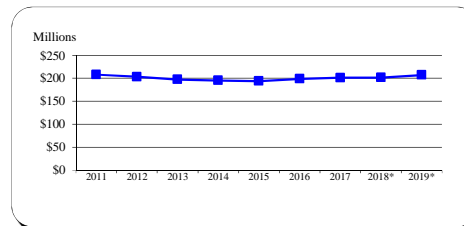


Tax rate is currently 3.03%. The Board of County Commissioners lowered the rate of 3.04% to 3.03% effective January 1, 2015.

Typically, 9.09% of income tax revenue is directly appropriated to the CIP for school construction. For FY 17, the Commissioners temporarily reduced this amount to 7.09% with 2.0% going to Operating. For FY 18, the Commissioners temporarily reduced this amount to 7.59% with 1.5% going to Operating. Source: FY 17 Carroll County CAFR, Schedule 1-1

Total Local Property Tax Collected

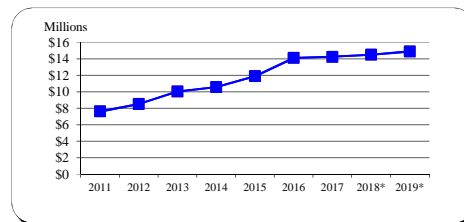
Year	Taxes Collected	% Change
2011	\$208,296,512	3.4%
2012	203,601,066	-2.3%
2013	197,727,477	-2.9%
2014	195,528,915	-1.1%
2015	194,029,688	-0.8%
2016	199,281,166	2.7%
2017	201,438,220	1.1%
2018*	201,763,310	0.2%
2019*	207,371,492	2.8%



The tax rate decreased from \$1.048 to \$1.028 for Real Property and from \$2.62 to \$2.57 for Personal Property in FY 12. The tax rate decreased to \$1.018 for Real Property and \$2.545 for Personal Property in FY 13. In FY 14, the Personal Property tax rate decreased to \$2.515. Source: FY 17 Carroll County CAFR, Table 4: 6 Year Operating Revenue

Recordation Tax Collected

Year	Base	% Change
2011	\$7,612,907	-0.7%
2012	8,520,674	11.9%
2013	10,021,395	17.6%
2014	10,576,850	5.5%
2015	11,888,637	12.4%
2016	14,093,918	18.5%
2017	14,241,331	1.0%
2018*	14,500,000	1.8%
2019*	14,900,000	2.8%



Source: FY 17 Carroll County CAFR, Table 4: 6 Year Operating Revenue

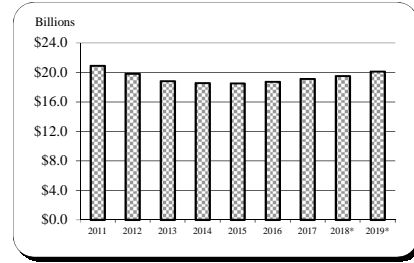
* Indicates budgeted amount

Financial and Demographic Data

Assessable Base - Real and Personal Property

Year	Base	% Change
2011	20,907,114,686	-5.3%
2012	19,829,611,572	-5.2%
2013	18,808,823,173	-5.1%
2014	18,549,381,425	-1.4%
2015	18,495,548,665	-0.3%
2016	18,733,020,866	1.3%
2017	19,098,609,701	2.0%
2018*	19,516,579,000	2.2%
2019*	20,122,357,000	3.1%

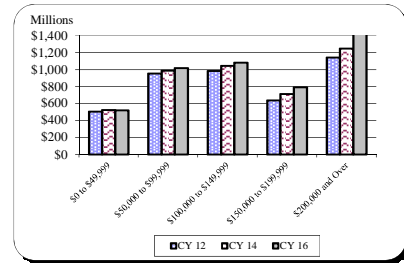
All years are expressed at 100% of assessed value.
 Sources: FY 10 - FY 17 Carroll County CAFR, Table 6
 FY 18 - FY 19 Maryland State Department of Assessment and Taxation March 2018 Update



Net Taxable Income

Income Range	CY 12	CY 14	CY 16
\$0 to \$49,999	\$504,668,381	\$522,162,169	\$520,423,055
\$50,000 to \$99,999	952,519,093	985,787,690	1,017,896,116
\$100,000 to \$149,999	983,536,421	1,042,452,581	1,079,249,194
\$150,000 to \$199,999	635,495,497	712,442,833	790,863,349
\$200,000 and Over	1,142,444,172	1,247,358,619	1,457,039,100

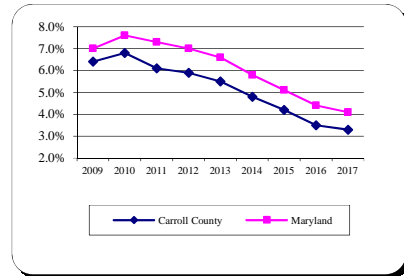
Source: Comptroller of Maryland Income Tax Summary Reports 2012-2016



Average Annual Unemployment Rates

Year	Carroll County	Maryland
2009	6.4%	7.0%
2010	6.8%	7.6%
2011	6.1%	7.3%
2012	5.9%	7.0%
2013	5.5%	6.6%
2014	4.8%	5.8%
2015	4.2%	5.1%
2016	3.5%	4.4%
2017	3.3%	4.1%

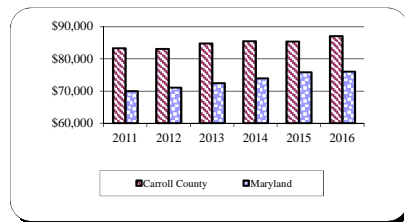
Source: MD Department of Labor, Licensing and Regulation



Median Household Income

Year	Carroll County	Maryland
2011	\$83,325	\$70,004
2012	83,155	71,122
2013	84,790	72,483
2014	85,532	73,971
2015	85,385	75,847
2016	87,060	76,067

Source: U.S. Census Bureau, American Community Survey



* Indicates budgeted amount

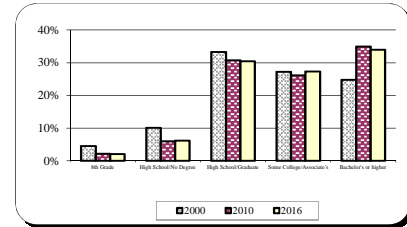
Financial and Demographic Data

Educational Attainment

	2000	2010	2016
Population 25+ years			
8th Grade	4.6%	2.2%	2.1%
High School/No Degree	10.1%	6.0%	6.2%
High School/Graduate	33.3%	30.8%	30.4%
Some College/Associate's	27.2%	26.1%	27.3%
Bachelor's or higher	24.8%	34.9%	34.0%

Sources: US Census Bureau - 2000, 2010 Census

US Census Bureau - 2016 American Community Survey



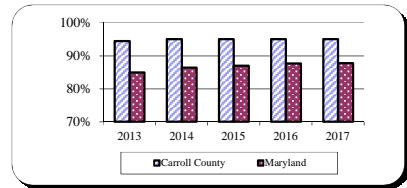
Graduation Rates

Year	Carroll County	Maryland
2013	94.4%	85.0%
2014	95.0%	86.4%
2015	95.0%	87.0%
2016	95.0%	87.6%
2017	95.0%	87.7%

Source: 2017 Maryland Report Card

Note: The percentages represent the 4 Year Adjusted Cohort Rate.

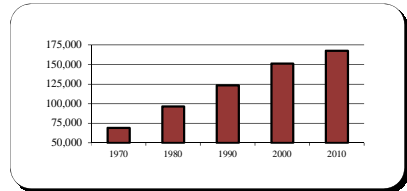
95% in a category indicates > 95 and corresponding counts have been suppressed.



Population

Year	Carroll County
April 1, 1970 Census	69,006
April 1, 1980 Census	96,356
April 1, 1990 Census	123,372
April 1, 2000 Census	150,897
April 1, 2010 Census	167,134

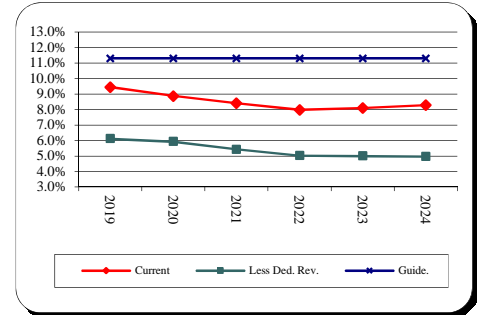
Source: US Census Bureau



Financial and Demographic Data

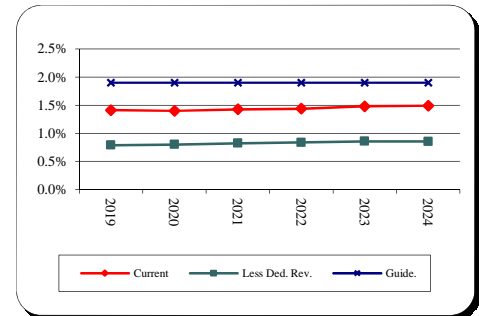
General Fund Debt Service/General Fund Revenue

<u>Fiscal Year</u>	<u>Current Position</u>	<u>Revenue and Supported D/S</u>	<u>County Guideline</u>
2019	9.4%	6.1%	11.3%
2020	8.9%	5.9%	11.3%
2021	8.4%	5.4%	11.3%
2022	8.0%	5.0%	11.3%
2023	8.1%	5.0%	11.3%
2024	8.3%	5.0%	11.3%



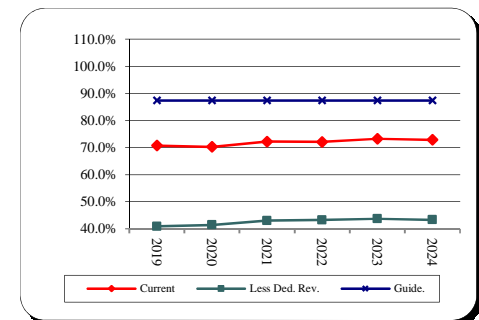
General Fund Debt/Assessable Base

<u>Fiscal Year</u>	<u>Current Position</u>	<u>Revenue and Supported Debt</u>	<u>County Guideline</u>
2019	1.41%	0.79%	1.90%
2020	1.40%	0.80%	1.90%
2021	1.43%	0.82%	1.90%
2022	1.44%	0.84%	1.90%
2023	1.48%	0.86%	1.90%
2024	1.49%	0.86%	1.90%



General Fund Debt/General Fund Revenue

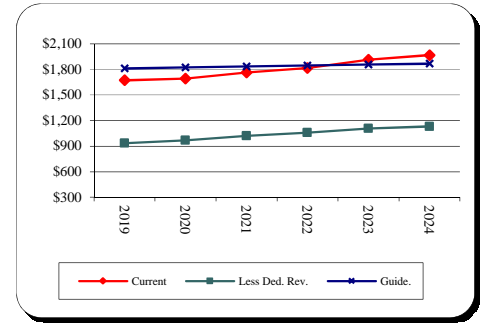
<u>Fiscal Year</u>	<u>Current Position</u>	<u>Revenue and Supported Debt</u>	<u>County Guideline</u>
2019	70.8%	40.9%	87.4%
2020	70.3%	41.5%	87.4%
2021	72.3%	43.0%	87.4%
2022	72.1%	43.3%	87.4%
2023	73.3%	43.8%	87.4%
2024	72.9%	43.4%	87.4%



Financial and Demographic Data

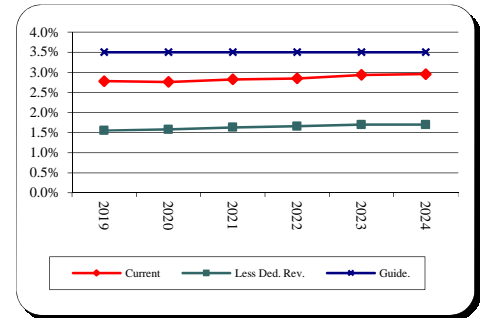
General Fund Debt/Capita

<u>Fiscal Year</u>	<u>Current Position</u>	<u>Revenue and Supported Debt</u>	<u>County Guideline</u>
2019	1,672	933	1,811
2020	1,692	967	1,822
2021	1,765	1,018	1,834
2022	1,816	1,056	1,845
2023	1,914	1,106	1,856
2024	1,968	1,130	1,868



General Fund Debt/Personal Income

<u>Fiscal Year</u>	<u>Current Position</u>	<u>Revenue and Supported Debt</u>	<u>County Guideline</u>
2019	2.8%	1.6%	3.5%
2020	2.8%	1.6%	3.5%
2021	2.8%	1.6%	3.5%
2022	2.8%	1.7%	3.5%
2023	2.9%	1.7%	3.5%
2024	3.0%	1.7%	3.5%



Total Debt Service/General Fund Revenue

<u>Fiscal Year</u>	<u>Current Position</u>	<u>Less Ded. Rev. Revenue and Supported DS</u>	<u>County Guideline</u>
2019	10.2%	6.1%	12.0%
2020	9.7%	5.9%	12.0%
2021	9.2%	5.4%	12.0%
2022	8.8%	5.0%	12.0%
2023	9.0%	5.0%	12.0%
2024	9.0%	5.0%	12.0%

