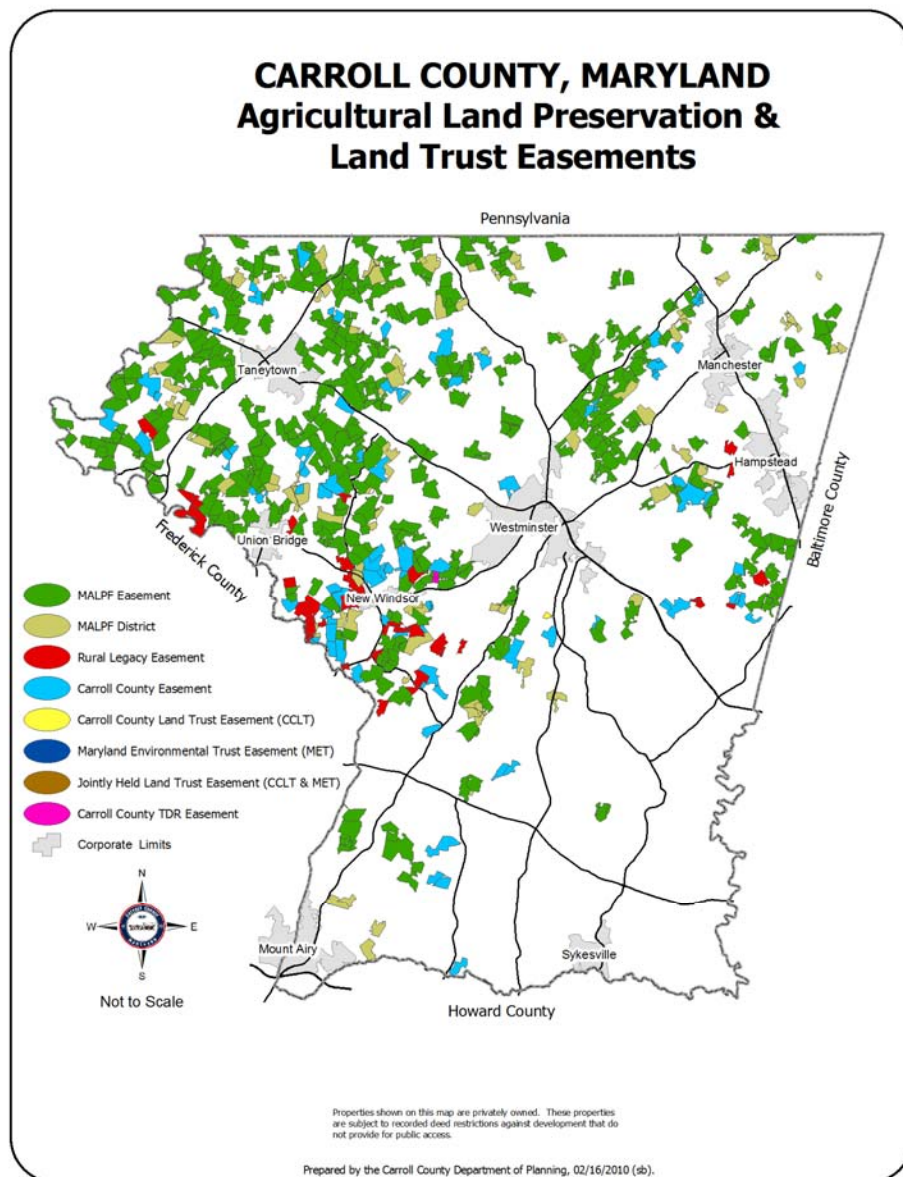
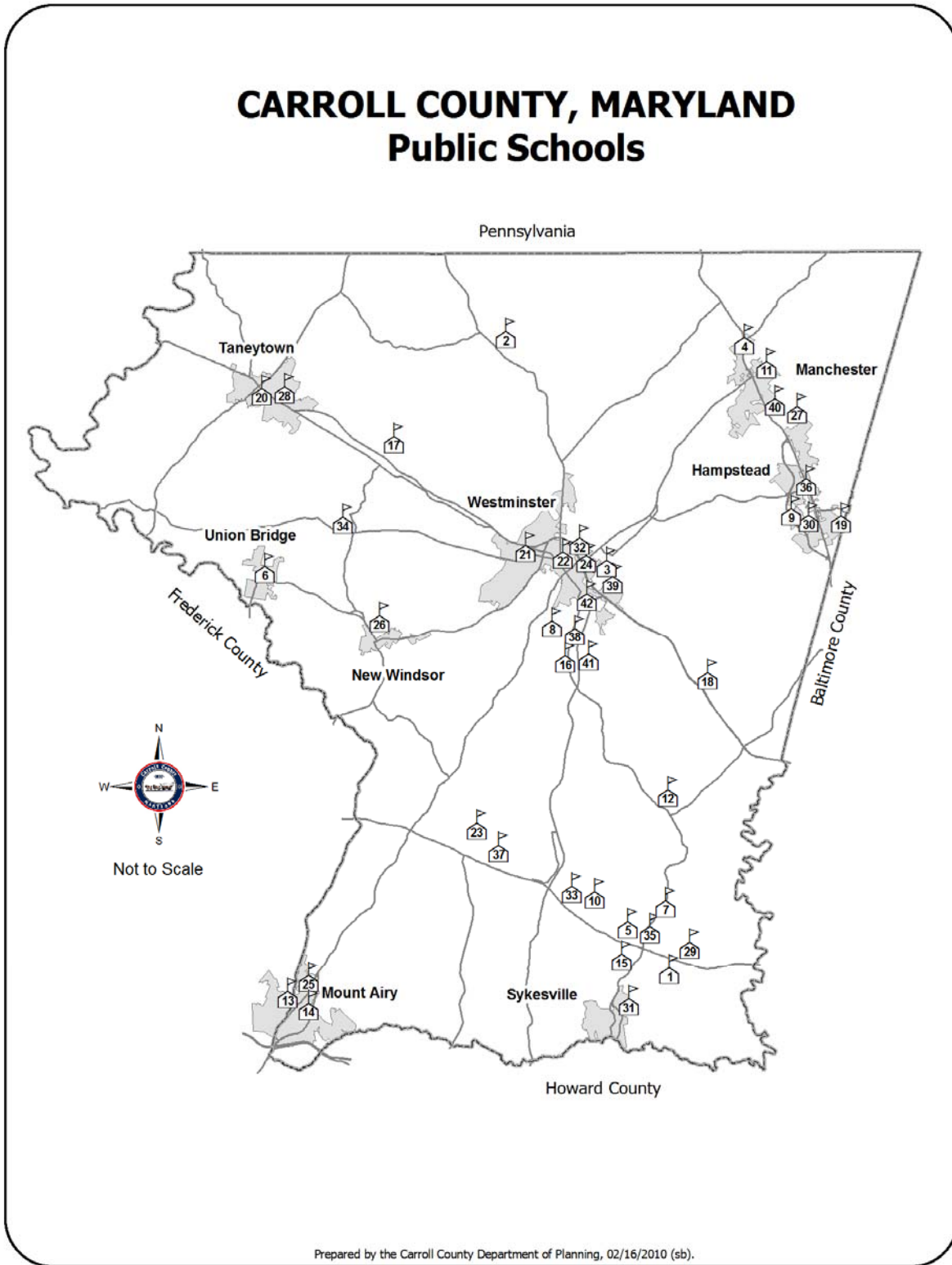


Agricultural Land Preservation Map

Approximately 141,934 acres, or 49 percent of the land in Carroll County, is being used for agriculture. Carroll County has been actively working to preserve agricultural land since the Maryland Agricultural Land Preservation Foundation (MALPF) program first began purchasing easements in 1979. As of December 2010, a total of 60,191 acres were permanently preserved in Carroll County by a recorded deed of easement. With these totals, Carroll County ranks first in the country in total percentage of land preserved through agricultural easement. While the vast majority of easement acreage in the County is through MALPF (43,339 acres), other state and county land preservation programs have contributed in protecting Carroll County's agricultural landscape; a County easement program, the State's Rural Legacy Program, Maryland Environmental Trust (MET) and Carroll County Land Trust (CCLT) are actively involved in preserving additional farmland. Whereas the County Program and the Rural Legacy Program both acquire easements through purchase, MET and CCLT accept donated easements that in turn may provide potential property and income tax credits and/or deductions for the donors.



Public Schools Map



Parks and Recreation Areas

There are 29 county parks, 22 town parks, and 2 state parks located in Carroll County. The location of these parks is illustrated by the map on the following page. The number to the left of each park below corresponds to the location of the park on the map. Additionally, there are a number of private recreational facilities, community open spaces, and community recreation centers located throughout the county.

No.	County Parks
1	Bark Hill Recreation Area
2	Bear Branch Nature Center
3	Bennett Cerf Park
4	Bird Sanctuary
5	Cape Horn Park
6	Carroll County Aero Modelers Park
7	Carroll County Equestrian Center
8	Carroll County Sports Complex
9	Cherrytown Road Ballfields
10	Deer Park
11	Freedom Park
12	Gillis Falls Reservoir Park (Proposed)
13	Hashawha Environmental Area
14	Hodges Park
15	Kate Wagner Road Park

No.	County Parks
16	Krimgold Park (Proposed)
17	Landon C. Burns Park
18	Leister Park (Proposed)
19	Mayeski Park
20	North Carroll Pond
21	Old Liberty Road Ballfields
22	Piney Run Park
23	Salt Box Park
24	Sandymount Park
25	Union Mills Homestead Park
26	Union Mills Reservoir Area (Proposed)
27	Westminster Community Pond
28	Double Pipe Creek Park
29	Obrecht Road Ballfields (Hall Property)

No.	Town Parks
1	Bishops Garth
2	Burkett Park
3	Chief Sites Park
4	Christmas Tree Park
5	Dutterer Family Park
6	Hampstead Community Park
7	Hampstead Memorial Park
8	Jaycee Park
9	King Park
10	Millard Cooper Park
11	Old Taneytown H.S. Park

No.	Town Parks
12	Pine Valley Park
13	Taneytown Rod and Gun Club Park
14	Roth Avenue Park
15	Seibel Park
16	Sulphur Spring Park
17	Sykesville Linear Park
18	Taneytown Memorial Park
19	Union Bridge Community Park
20	Watkins Park
21	Westminster City Playground
22	Westside Memorial Park

No.	State Parks
1	Morgan Run Environmental Area

No.	State Parks
2	Patapsco Valley State Park

Source: Carroll County Department of Recreation and Parks

Parks and Recreation Areas Map

