

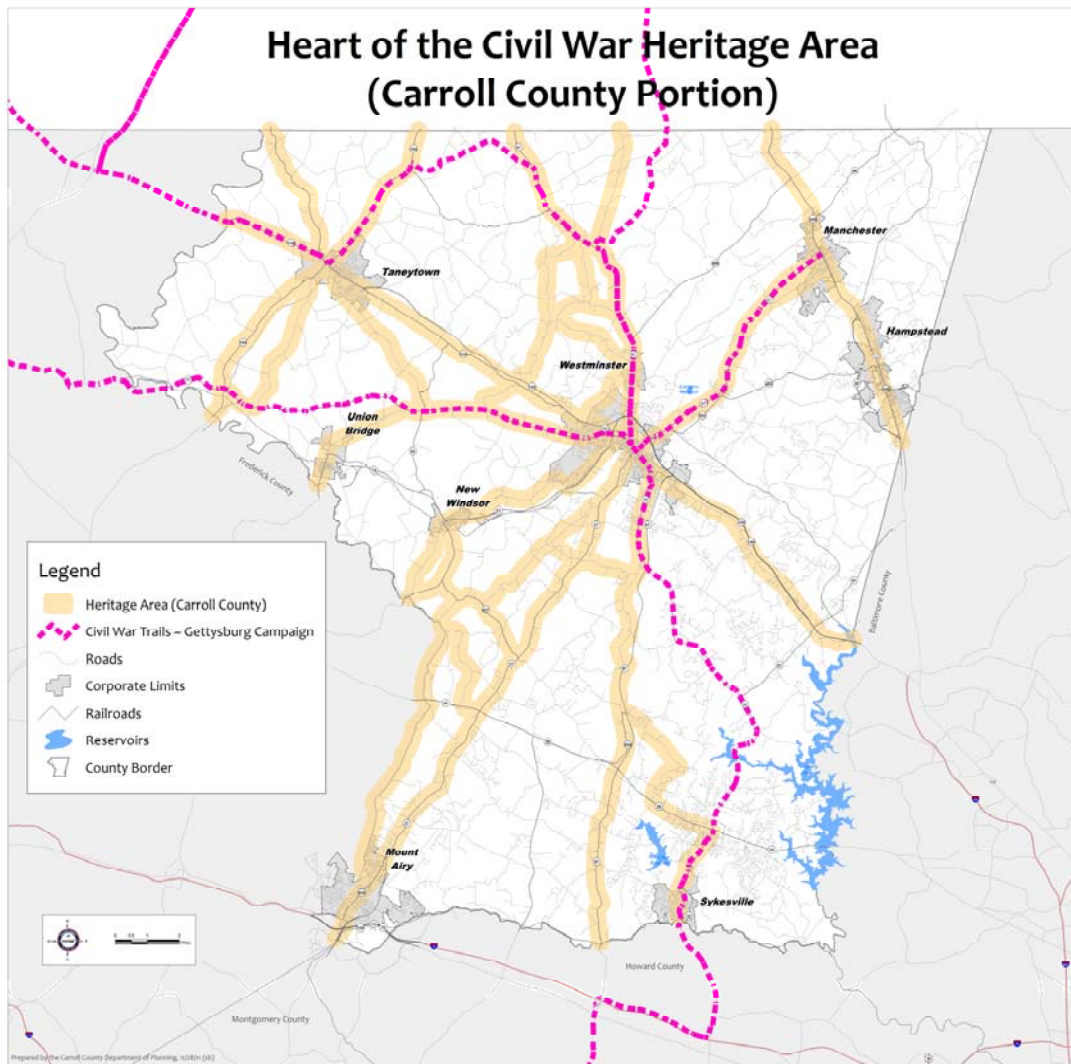
Chapter 21: Associated Plan Elements

The following plans and plan elements have been incorporated by reference into the Carroll County Master Plan by amendment. They are contained under separate cover and generally are available for review on the Internet or through the Department of Land Use, Planning & Development.

■ Heart of the Civil War Heritage Area Management Plan

The Heart of the Civil War Heritage Area promotes the enhancement and stewardship of our historic, cultural, and natural resources through Civil War-related heritage tourism. Carroll County and each of the eight municipalities have adopted The Heart of the Civil War Heritage Area Management Plan as an amendment to their master or comprehensive plans. As a result, Carroll County businesses and organizations within the heritage area are eligible to use State grants, loans, and tax incentives to undertake projects that support the enhancement, promotion, interpretation and protection of the heritage area's significant Civil War-related history. The Carroll County Master Plan was amended on October 5, 2006 to incorporate the Civil War Heritage Area Management Plan.

Copies of the plan are available for review on the Heritage Area's website: www.heartofthecivilwar.org, or at the Carroll County Department of Land Use, Planning & Development.

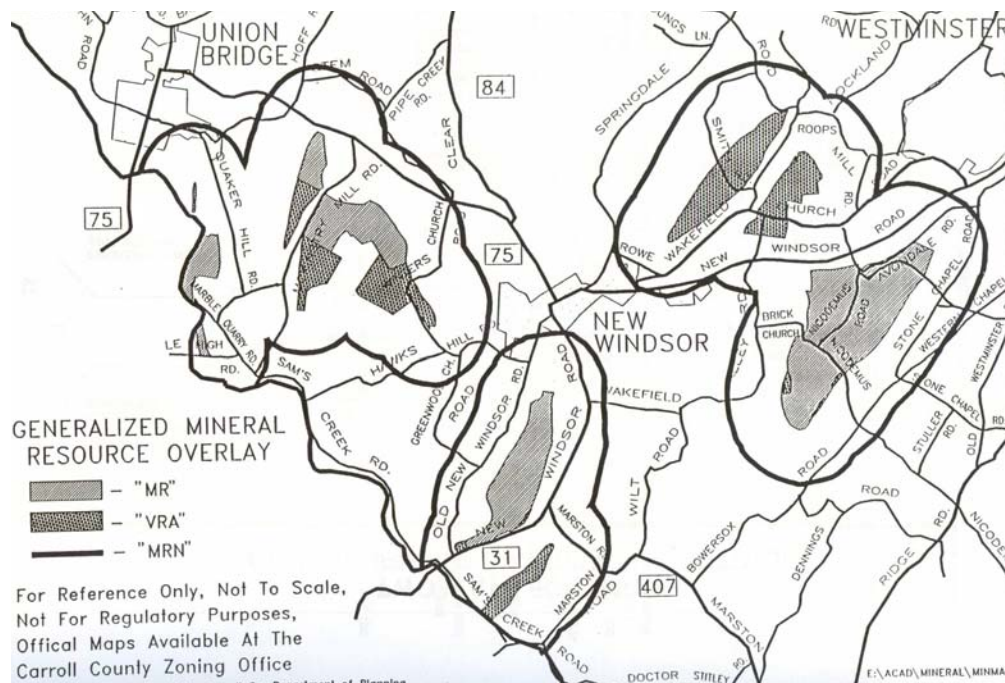


■ Mineral Resources Element

On February 27, 1992, the County adopted the Carroll County Comprehensive Mineral Resources Plan, as well as its related implementation mechanisms. This plan element, prepared in accordance with Article 66B as an element of the master plan, identifies “undeveloped land that should be kept in its undeveloped state until the land can be used to provide or assist in providing a continuous supply of minerals” in the future. In addition, the plan also identifies appropriate post-excitation uses for the land that are consistent with the County’s land planning process. The plan pertains to western areas of the county that contain large deposits of Wakefield Marble – specifically land that lies between Westminster, New Windsor, and Union Bridge.

Regulations associated with the plan were adopted to establish a Mineral Resource Overlay zone, perform a comprehensive rezoning consistent with the plan and zone, amend the landscape manual to address buffering of resource recovery operations, and establish a transfer of development rights (TDR) program to prevent the preemption of mineral resources extraction, among other things.

Copies of the plan are available for review on the Carroll County Department of Land Use, Planning & Development website at:
<http://ccgovernment.carr.org/ccg/complan/mineral/default.asp>.



■ Water Resources Element

The Water Resources Element ensures that future county and municipal comprehensive plans reflect the opportunities and limitations presented by local and regional water resources. The State passed HB 1141 in May 2006, which requires each jurisdiction to evaluate the relationship between planned growth and water resources. Carroll County coordinated with the municipalities to create an element that was a reflection of water resources within the whole county. The County adopted the Water Resources Element of the County Master Plan on April 1, 2010. Each of the municipalities has adopted this element as a part of their own comprehensive plans as well.

Copies of the plan are available for review on the Carroll County Department of Land Use, Planning & Development website at:
<http://ccgovernment.carr.org/ccg/complan/WRE/default.asp>.